

Tree Assessment

Windwood Hollow Park



Submitted by:
Arboguard Tree Specialists
June 2012

Table of Contents

Introduction	1
Species Distribution	2
Diameter Values	3
Vitality Ratings	4
Maintenance Priority Levels	5
Maintenance Schedule	6
Appendix A Latin Names	7
Appendix B Data	8

Introduction

A tree assessment was conducted on trees in high pedestrian, traffic and recreational areas within Windwood Hollow Park. Specimen trees within the park were also located. Specimen tree criteria is defined in the City of Dunwoody Tree Ordinance Section 16-195(h) as follows: hardwood trees ≥ 24 " diameter at breast height (DBH), softwood trees ≥ 30 " DBH and flowering understory trees ≥ 6 " DBH.

There were a total of 20 trees inventoried within Windwood Hollow Park. The trees consist of 6 species. The most common tree species are Southern Red Oak and Post Oak. The inventory was completed using GIS and GPS technology. This report is intended to be used as a management tool to sustain and promote healthy trees and improve the environmental quality of the area.

Windwood Park Urban Forest Summary	
Feature	Measure
Number of Trees Surveyed	20
Number of Species	6
Most Common Species	Southern Red Oak & Post Oak
Most common diameter	16"-20" (35% of all trees)
Largest diameter	31"
Condition	Good=0 Fair=14 Poor=4 Dead=2
Maintenance Priority Levels *	1=11 2=9 3=0 4=0

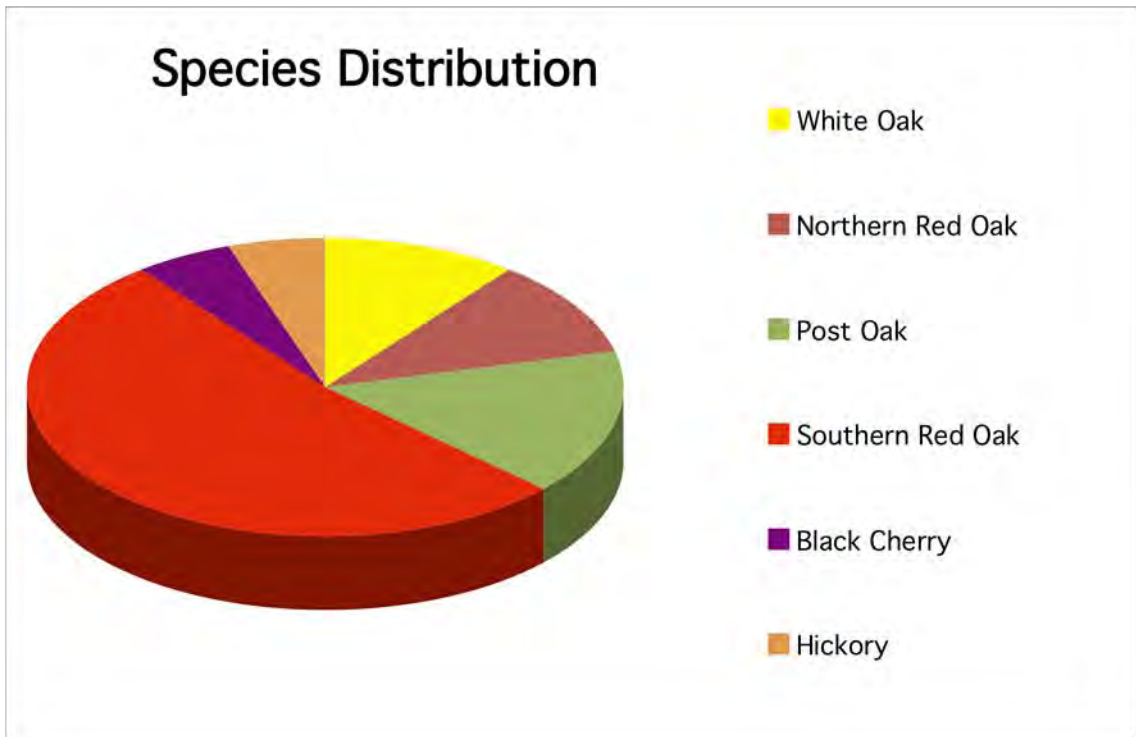
Results

The data from this survey is shown in its entirety in Appendix B of this report. The following information has been taken from the data and summarized where relevant.

(*See page 5 for more information of Maintenance Priority Levels)

Species Distribution

There are 6 different species of tree surveyed inside Windwood Hollow Park. The predominant species as ranked by their total number as compared to the total trees inventoried are as follows:



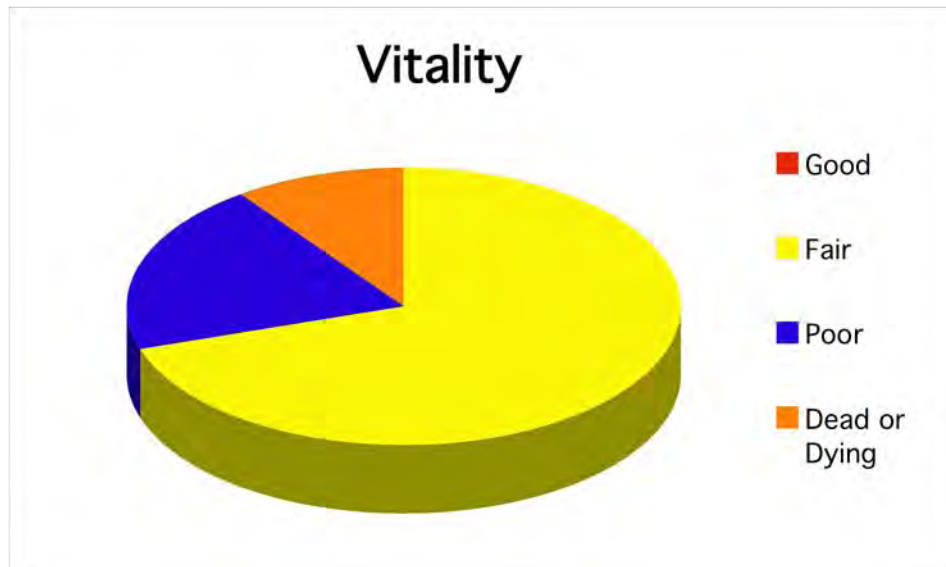
Amount of Trees Per Species

Species	Number of Trees
White Oak	2
Northern Red Oak	2
Post Oak	3
Southern Red Oak	10
Black Cherry	1
Hickory	2

Vitality Rating

Of the trees surveyed, 0% are in good condition, 70% are in fair condition, 20% are in poor condition and 10% are dead. It is important to note that vitality is not necessarily an indicator of structural integrity or the safety of a tree. Vitality is simply a judgment made by the field technician concerning the outward signs of health of the tree.

Vitality	Amount
Good	0
Fair	14
Poor	4
Dead	2



Maintenance Priorities

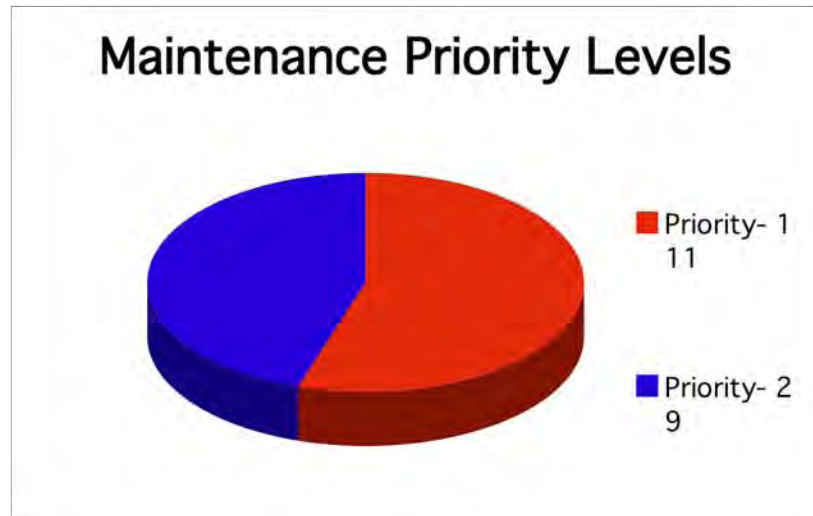
Priority 1= Action is required as soon as possible. These trees may be dead, hazardous, in need of a risk assessment using Resistograph technology or requires pruning or other actions as soon as possible.

Priority 2= These trees will require action in the near future.

Priority 3= Maintenance priorities 1-2 should be addressed before maintenance priority 3.

Priority 4= Maintenance is not required at this time.

Maintenance Priority	Amount
Priority 1	11
Priority 2	9
Priority 3	0
Priority 4	0



Maintenance Schedule

This 11 acre park is currently occupied by a tennis court, playground picnic pavilion and walking trails. Twenty trees were identified as needing pruning or removal at this location.

The following budget for tree pruning is reflective of standard tree care rates typical of fully insured and highly qualified local arborists. It is expected that to satisfactorily complete this work it will require a time budget of approximately 3 days.

Remove approximately 6 trees as needed, leave debris in woods as wildlife habitat where appropriate:

- Labor: \$1950

Prune dead limbs over sidewalk as needed:

- Labor: \$3900

Total estimated removal and pruning budget: \$5850

Appendix A

Common Name – Latin Name Key

Common Name	Trees - Latin	Native/Adaptive
White Oak	<i>Quercus alba</i>	YES
Northern Red Oak	<i>Quercus rubra</i>	YES
Post Oak	<i>Quercus stellata</i>	YES
Southern Red Oak	<i>Quercus falcata</i>	YES
Black Cherry	<i>Prunus serotina</i>	YES
Mockernut Hickory	<i>Carya tomentosa</i>	YES

Appendix B

The inventory is a compilation of information gathered about the trees. All trees were located utilizing GPS technology and the following data parameters recorded for each tree.

Term	Description
Tree No.	All trees were numbered with an aluminum tag bearing a unique number and located utilizing GPS technology.
Species	Listed as the North American common name.
DBH	Diameter of trunk in inches, measured at 4.5' feet above average soil level. Measurements were taken using a forestry diameter tape.
Vitality	<p>Good Tree has excellent vigor and is actively growing without any serious pathogenic problems. Tree exhibits a structural form that is safe and typical of the species.</p> <p>Fair Tree is in moderate health, but may have a minor pathogenic problem. Some insects and disease could be present. Tree may have minor structural defects, but does not exhibit optimal form for the species in an urban environment. A tree in fair condition may not react favorably to site developments or additional stress.</p> <p>Poor Tree's vigor is low to moderate. It may also have moderate to severe structural defects or a form that is undesirable for the species. Some trees in poor condition are not recoverable and could degrade into a state of advanced decline leading to death.</p>
Maintenance Recommendations	Any maintenance needed; such as pruning, soil therapy, install cables or removal.
Maintenance Priority	Urgency of the required maintenance rated from 1 to 4.
Comments	Any other additional notes about the tree that were not adequately addressed in the other fields.
Location	Specifies where the trees can be found such as by address or approxiamte location in a park.

CITY OF DUNWOODY

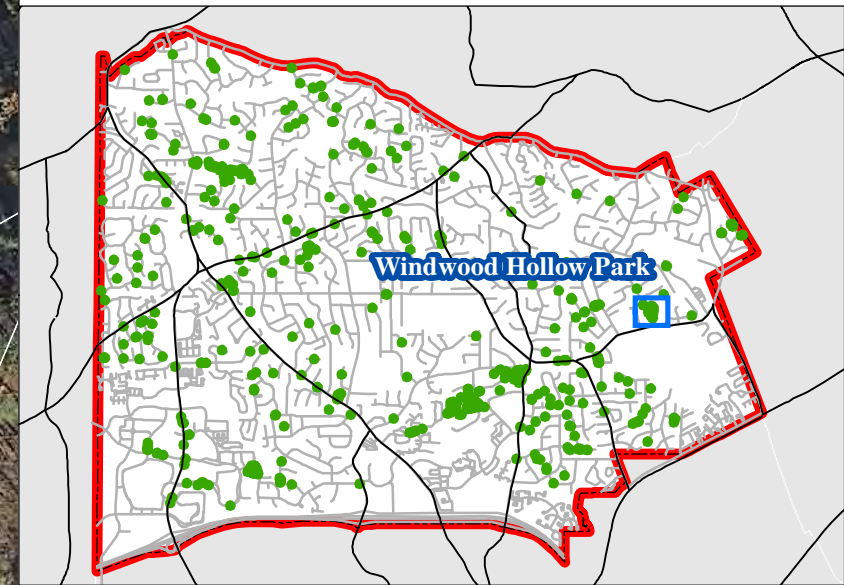
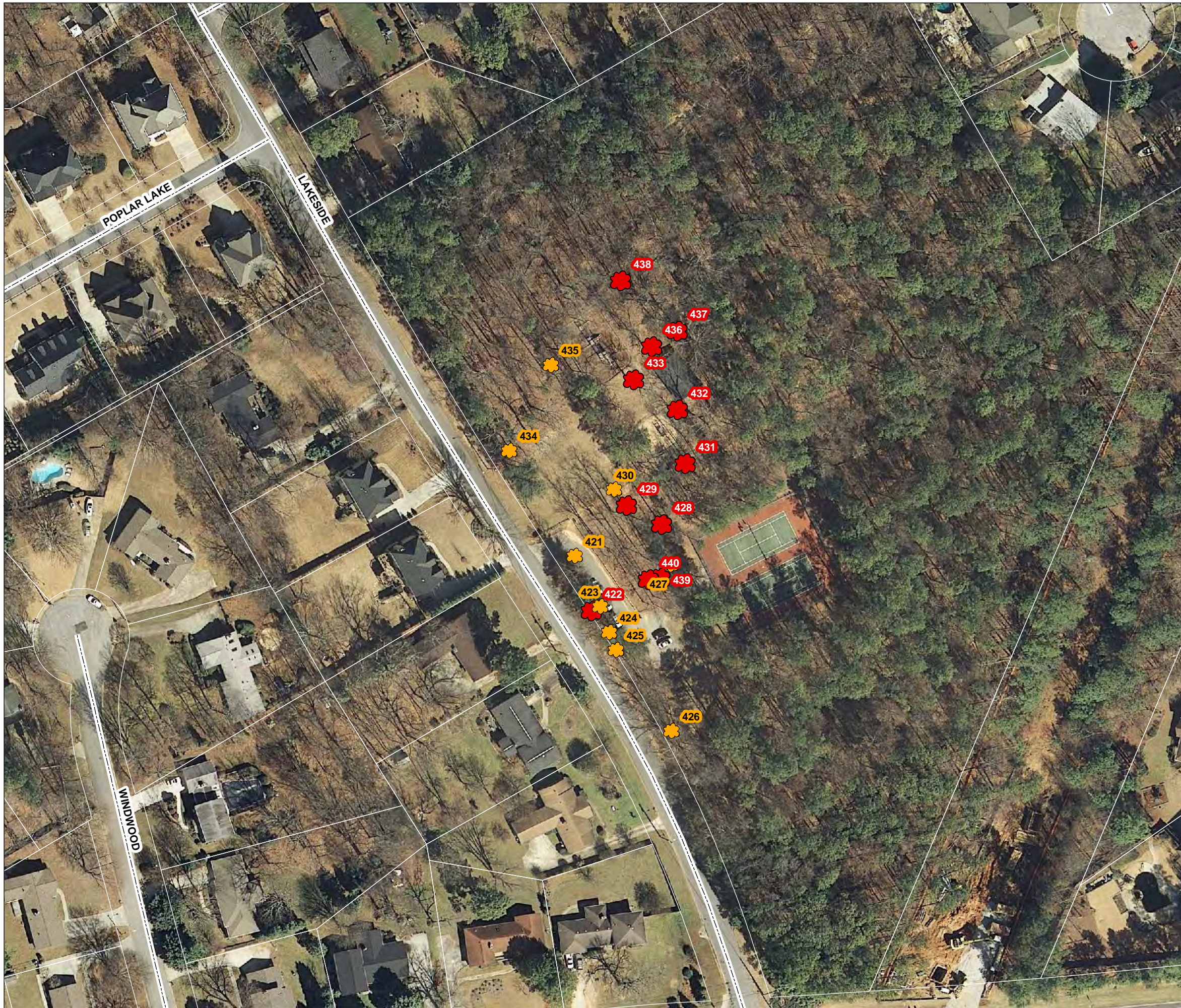
Tree Survey

Windwood Park

Tree #	Species	DBH	DBH2	DBH3	Vitality	Mtn Rec	Mtn Prior	Comments	Location
421	Oak-White	14	8	6	Fair	Prune low limbs	2	Multistem, weak union with included bark, low limbs over roadway	Entrance to Windwood Park
422	Oak-Southern Red	6	0	0	Poor	Remove	1	Mistletoe, low limbs over road, 50% dead	Entrance to Windwood Park
423	Oak-Southern Red	13	0	0	Fair	Prune low limbs	2	Low limbs over road	Entrance to Windwood Park
424	Cherry-Black	7	0	0	Fair	Prune deadwood	2	Low limbs over road	Entrance to Windwood Park
425	Oak-Northern Red	12	0	0	Fair	Prune deadwood	2	Dead limbs over road	Entrance to Windwood Park
426	Oak-Southern Red	19	0	0	Fair	Prune deadwood	2	Low limbs over road	Entrance to Windwood Park
427	Oak-White	24	0	0	Fair	Prune deadwood	2	Dead limbs over sidewalk	Windwood Park Tennis Court
428	Oak-Southern Red	17	0	0	Fair	Prune deadwood	1	Dead limbs over sidewalk	Windwood Park Tennis Court
429	Oak-Southern Red	17	0	0	Poor	Remove	1	Top broken out at 30 feet high	Windwood Park activity field
430	Oak-Southern Red	13	12	8	Poor	Cable leads	2	Multistem at base, weak union, included bark	Windwood Park activity field
431	Oak-Southern Red	3	0	0	Dead	Remove	1	Dead tree beside sidewalk to playground	Windwood Park sidewalk to playground
432	Oak-Post	13	0	0	Fair	Prune deadwood	1	Dead scaffold limbs over sidewalk	Windwood Park sidewalk to playground
433	Oak-Post	18	0	0	Fair	Prune deadwood	1	Dead limbs over playground	Windwood Park playground
434	Oak-Post	18	0	0	Poor	Prune deadwood	2	Aerial cavity at 15 ft., wound at base	Windwood Park activity field near treeline
435	Oak-Southern Red	18	0	0	Fair	Prune deadwood	2	Dead scaffold limbs	Windwood Park activity field near treeline
436	Oak-Southern Red	22	0	0	Fair	Prune deadwood	1	Dead limbs over playground	Windwood Park playground and pavilion
437	Oak-Southern Red	31	0	0	Fair	Prune deadwood	1	Dead limbs over pavilion	Windwood Park pavilion
438	Oak-Northern Red	17	0	0	Dead	Remove	1	Hazard	Windwood Park behind playground
439	Hickory	8	0	0	Fair	Remove	1	Cavity in base	Windwood Park sidewalk
440	Hickory	6	0	0	Fair	Remove	1	Cavity in base	Windwood Park sidewalk

Maintenance Priority

City of Dunwoody



Maintenance Priority Level

Windwood Hollow Park



Priority 1



Priority 2



Priority 3



Priority 4

Legend

- Roads
- Railroads
- ▭ Parcels
- ▭ Lakes / Water Features

1 inch = 100 feet



Dunwoody
Smart people - Smart city

Solutions Naturally
Arboguard
Tree Specialists

Ecological
Planning
Group

A|EC