

# Tree Assessment

# *Dunwoody*

# *Nature Center*



Submitted by:  
Arboguard Tree Specialists  
June 2012

## Table of Contents

Introduction	1
Species Distribution	2
Diameter Values	4
Vitality Ratings	5
Maintenance Priority Levels	6
Maintenance Schedule	7
Appendix A Latin Names	8
Appendix B Data	9

## Introduction

A tree assessment was conducted on trees in high pedestrian, traffic and recreational areas within the Dunwoody Nature Center. Specimen trees within the nature center were also located. Specimen tree criteria is defined in the City of Dunwoody Tree Ordinance Section 16-195(h) as follows: hardwood trees  $\geq 24$ " diameter at breast height (DBH), softwood trees  $\geq 30$ " DBH and flowering understory trees  $\geq 6$ " DBH.

There were a total of 130 trees inventoried within the Nature Center. The trees consist of 15 species. The most common tree species are Tulip Poplar and Sourwood. The inventory was completed using GIS and GPS technology. This report is intended to be used as a management tool to sustain and promote healthy trees and improve the environmental quality of the area.

Dunwoody Nature Center Urban Forest Summary	
Feature	Measure
Number of Trees Surveyed	130
Number of Species	15
Most Common Species	Tulip Poplar & Sourwood
Most common diameter	26"-30" (23% of all trees)
Largest diameter	50"
Condition	Good=52 Fair=40 Poor=6 Dead=22
Maintenance Priority Levels *	1=38 2=20 3=13 4=59

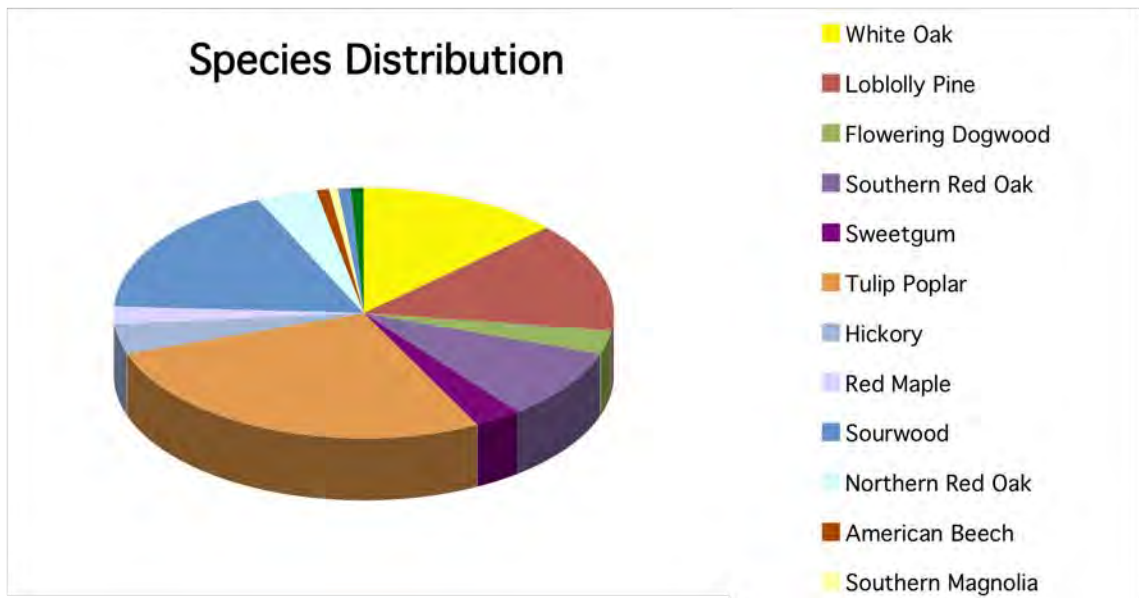
## Results

The data from this survey is shown in its entirety in Appendix B of this report. The following information has been taken from the data and summarized where relevant.

(\* See page 6 for more information of Maintenance Priority Levels)

## Species Distribution

There are 15 different species of tree surveyed inside Dunwoody Nature Center. The predominant species as ranked by their total number as compared to the total trees inventoried are as follows:



### Amount of Trees Per Species

Species	Number of Trees
White Oak	17
Loblolly Pine	18
Flowering Dogwood	4
Southern Red Oak	12
Sweetgum	4
Tulip Poplar	35
Hickory	5
Red Maple	3
Sourwood	22
Northern Red Oak	5
American Beech	1
Southern Magnolia	1
Black Cherry	1
Black Locust	1
Post Oak	1





Maintenance Priorities

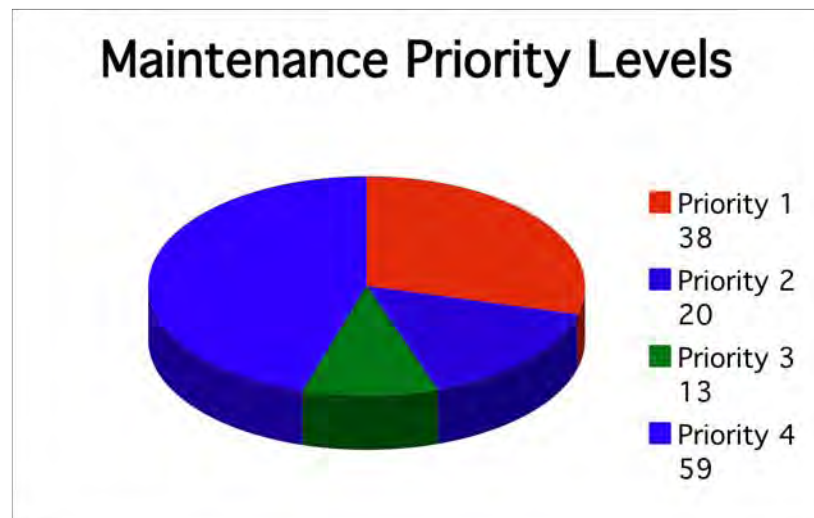
Priority 1= Action is required as soon as possible. These trees may be dead, hazardous, in need of a risk assessment using Resistograph technology or requires pruning or other actions as soon as possible.

Priority 2= These trees will require action in the near future.

Priority 3= Maintenance priorities 1-2 should be addressed before maintenance priority 3.

Priority 4= Maintenance is not required at this time.

Maintenance Priority	Amount
Priority 1	38
Priority 2	20
Priority 3	13
Priority 4	59





## Maintenance Schedule

This 35 acre park is currently occupied by a variety of structures, activity areas and walking trails. 28 trees were identified as needing pruning or removal at this location. It is recommended that an additional 7 trees receive organic nutrients to help improve their vigor

The following budget for tree pruning and removal is reflective of standard tree care rates typical of fully insured and highly qualified local arborists. It is expected that to satisfactorily complete this work it will require a time budget of approximately 3 days.

Remove approximately 9 trees as needed along footpaths in woods, leave debris in woods as wildlife habitat where appropriate:

- Labor: \$7800

Prune dead limbs over sidewalk and install steel support cables as needed:

- Labor: \$8280

Provide twice annually supplemental organic nutrients to approximately 7 specimen trees:

- \$1180

Total estimated removal, pruning and fertilization budget: \$17260

## Appendix A

### Common Name – Latin Name Key

Common Name	Trees - Latin	Native/ Adaptive
White Oak	<i>Quercus alba</i>	YES
Loblolly Pine	<i>Pinus taeda</i>	YES
Red Maple	<i>Acer rubrum</i>	YES
Tulip Poplar	<i>Liriodendron tulipifera</i>	YES
Sweetgum	<i>Liquidambar styraciflua</i>	YES
Southern Red Oak	<i>Quercus falcata</i>	YES
Flowering Dogwood	<i>Cornus florida</i>	YES
Mockernut Hickory	<i>Carya tomentosa</i>	YES
Northern Red Oak	<i>Quercus rubra</i>	YES
American Beech	<i>Fagus grandifolia</i>	YES
Southern Magnolia	<i>Mangolia grandiflora</i>	YES
Black Cherry	<i>Prunus serotina</i>	YES
Black Locust	<i>Robinia pseudoacacia</i>	YES
Post Oak	<i>Quercus stellata</i>	YES
Sourwood	<i>Oxydendrum arboreum</i>	YES

## Appendix B

The inventory is a compilation of information gathered about the trees. All trees were located utilizing GPS technology and the following data parameters recorded for each tree.

Term	Description
Tree No.	All trees were numbered with an aluminum tag bearing a unique number and utilizing GPS technology.
Species	Listed as the North American common name.
DBH	Diameter of trunk in inches, measured at 4.5' feet above average soil level. Measurements were taken using a forestry diameter tape.
Vitality	<p>Good ..... Tree has excellent vigor and is actively growing without any serious pathogenic problems. Tree exhibits a structural form that is safe and typical of the species.</p> <p>Fair ..... Tree is in moderate health, but may have a minor pathogenic problem. Some insects and disease could be present. Tree may have minor structural defects, but does not exhibit optimal form for the species in an urban environment. A tree in fair condition may not react favorably to site developments or additional stress.</p> <p>Poor ..... Tree's vigor is low to moderate. It may also have moderate to severe structural defects or a form that is undesirable for the species. Some trees in poor condition are not recoverable and could degrade into a state of advanced decline leading to death.</p>
Maintenance Recommendations	Any maintenance needed; such as pruning, soil therapy, install cables or removal.
Maintenance Priority	Urgency of the required maintenance rated from 1 to 4.
Comments	Any other additional notes about the tree that were not adequately addressed in the other fields.
Location	Specifies where the trees can be found such as by address or approxiamte location in a park.

CITY OF DUNWOODY

Tree Survey

Dunwoody Nature Center

Tree #	Species	DBH	DBH2	Vitality	Mtnc Rec	Mtnc Prior	Comments	Location
452	Pine-Loblolly	30	0	Fair	Prune deadwood	2	Canker at 2 feet high, deadwood stubs.	DNC driveway
453	Tulip Tree-Poplar	30	0	Fair	Soil therapy	3	Tip dieback	DNC driveway
454	Tulip Tree-Poplar	29	0	Fair	Soil therapy	3	Tip dieback	DNC driveway
455	Tulip Tree-Poplar	32	0	Fair	Prune deadwood	2	Deadwood, tip dieback	DNC entrance
456	Dogwood-Flowering	12	0	Fair	Prune deadwood	2	Deadwood over sidewalk	DNC entrance
457	Maple-Red	27	0	Fair	Cable leads	2	Multi stem with weak union and included bark	DNC entrance
458	Sweetgum	32	0	Fair	Prune deadwood	2	Deadwood over trail	DNC trailhead
459	Tulip Tree-Poplar	26	0	Good	None	4		DNC trailhead
460	Sweetgum	33	0	Good	None	4		DNC trailhead
461	Tulip Tree-Poplar	24	0	Fair	Prune deadwood	2	Dead scaffold over trail	DNC trailhead
462	Oak-White	27	0	Fair	Cable	2	Codominant at 10 ft. weak union, included bark	DNC trailhead
463	Maple-Red	24	0	Good	None	4		DNC trailhead
464	Tulip Tree-Poplar	30	0	Fair	Prune deadwood	2	Wounds on trunk at base, deadwood	DNC trailhead
465	Pine-Loblolly	30	0	Fair	Prune deadwood	3	Deadwood, codominant at 30 feet	DNC trailhead
466	Tulip Tree-Poplar	28	0	Fair	Soil therapy	3	Tip dieback	DNC trail boardwalk
467	Pine-Loblolly	14	0	Fair	Prune deadwood	3	Dead limbs over seats	DNC trail behind kiosk
468	Tulip Tree-Poplar	24	0	Fair	Prune deadwood	2	Dead limbs over trail	DNC-orange trail
469	Pine-Loblolly	12	0	Dead	Remove	1	Hazard	DNC-orange trail
470	Pine-Loblolly	23	0	Poor	Insecticide sprays	2	Boring beetles	DNC-orange trail at playground
471	Tulip Tree-Poplar	30	0	Fair	Prune deadwood	2	Dead limbs over trail	DNC-orange trail
472	Hickory	14	0	Dead	Remove	1	Hazard	DNC-orange trail
473	Oak-White	32	0	Fair	Prune deadwood	2	Dead limbs over trail	DNC-orange trail
474	Oak-Southern Red	14	0	Poor	Remove	1	Hazard	DNC-orange trail
475	Pine-Loblolly	12	0	Dead	Remove	1	Hazard	DNC-red trail
476	Hickory	13	0	Poor	Remove	1	Leaning over trail with cavity in base	DNC-red trail
477	Pine-Loblolly	18	0	Poor	Remove	1	Large canker in lower trunk	DNC-red and orange trail crossing
478	Oak-Southern Red	18	22	Dead	Remove	1	Hazard	DNC-red trail
479	Oak-Southern Red	31	0	Dead	Remove	1	Hazard	DNC-red trail
480	Oak-White	31	0	Fair	Prune deadwood	2	Deadwood, trunk wound at base	DNC-white trail
481	Tulip Tree-Poplar	20	0	Poor	Remove	1	60 % of base decayed, large cavity	DNC-white trail
482	Oak-White	20	0	Fair	Prune deadwood	2	Large dead scaffold over trail	DNC-white trail at bridge
483	Oak-White	30	0	Good	None	4		DNC-white trail at meadow
484	Tulip Tree-Poplar	24	0	Fair	Soil therapy	3	Crooked trunk, sparse canopy	DNC-white trail at meadow
485	Oak-Southern Red	30	0	Fair	Soil therapy	3	Asymmetrical canopy, sparse foliage	DNC-white trail at meadow
486	Oak-Southern Red	27	0	Fair	Soil therapy	3	Asymmetrical canopy, sparse foliage	DNC-white trail at meadow
487	Oak-Southern Red	27	0	Fair	Prune deadwood	2	Asymmetrical canopy, deadwood	DNC-white trail at meadow
488	Oak-Southern Red	26	0	Fair	Prune deadwood	2	Deadwood	DNC-white trail at meadow
489	Oak-Southern Red	34	0	Fair	Prune deadwood	2	Sparse canopy, deadwood	DNC-white trail at meadow
490	Oak-Southern Red	32	0	Fair	Cable leads	2	Codominant at 7ft	DNC- driveway entrance
846	Tulip Tree-Poplar	40	0	Fair	Prune Deadwood	3	Specimen	DNC trailhead
847	Tulip Tree-Poplar	26	0	Fair	None	1	Cavity at base needs resistograph inspection	DNC trail head
848	Pine-Loblolly	40	0	Fair	Prune Deadwood	3	Dead limbs over trail	DNC Trail head
849	Tulip Tree-Poplar	31	0	Good	None	4		Red trail at tree house
850	Tulip Tree-Poplar	24	0	Fair	None	4	Canopy Suppression	Red trail creek bank
851	Tulip Tree-Poplar	28	0	Fair	None	4	15° lean over creek	Red trail creek bank
852	Pine-Loblolly	14	0	Dead	Remove	1	Dead	Yellow trail
853	Tulip Tree-Poplar	28	0	Good	None	4		Yellow trail
854	Tulip Tree-Poplar	24	0	Good	None	4		Yellow trail
855	Tulip Tree-Poplar	25	0	Good	None	4		Yellow trail
856	Dogwood-Flowering	3	0	Dead	Remove	1	Dead	Yellow trail
857	Pine-Loblolly	18	0	Dead	Remove	1	Dead	Yellow trail
858	Pine-Loblolly	18	0	Dead	Remove	1	Dead	Red trail
859	Pine-Loblolly	18	0	Poor	Remove	1	Lower trunk significantly decayed	Orange trail
860	Sweetgum	15	0	Dead	Remove	1	Dead	Orange trail
861	Pine-Loblolly	12	0	Dead	Remove	1	Dead	Orange trail
862	Pine-Loblolly	12	0	Dead	Remove	1	Dead	Orange trail
863	Sourwood	6	0	Good	None	4		Orange trail
864	Sourwood	8	0	Good	None	4		Orange trail
865	Sourwood	7	0	Good	None	4		Orange trail
866	Sourwood	8	0	Poor	None	4	50° lean	Orange trail
867	Sourwood	8	0	Fair	Remove Vines	3	20° lean, vines	Orange trail
868	Sourwood	10	0	Good	Remove Vines	4	Vines	Orange trail

Tree #	Species	DBH	DBH2	Vitality	Mtnc Rec	Mtnc Prior	Comments	Location
869	Sourwood	6	0	Good	None	4		Orange trail
870	Oak-White	20	0	Dead	Remove	1	Dead	Orange trail
871	Tulip Tree-Poplar	24	0	Good	None	4		Orange trail
872	Tulip Tree-Poplar	24	0	Fair	None	4	Sparse canopy	Orange trail
873	Tulip Tree-Poplar	28	0	Good	None	4		Orange trail
874	Tulip Tree-Poplar	37	0	Fair	Cable	3	Co-dominant	Orange trail
875	Oak-Southern Red	25	0	Good	None	4		Orange trail
876	Tulip Tree-Poplar	30	0	Fair	Cable	4	Co-dominant	Orange trail
877	Sourwood	8	0	Good	None	4		Orange trail
878	Sourwood	6	0	Good	None	4		Orange trail
879	Sourwood	11	0	Good	None	4	Co-dominant	Red trail
880	Sourwood	10	0	Good	None	4		Red trail
881	Sourwood	6	0	Good	None	4		Red trail
882	Sourwood	11	0	Good	None	4		Red trail
883	Tulip Tree-Poplar	24	0	Good	None	4		Red trail
884	Sourwood	11	0	Good	None	4		Red trail
885	Sourwood	6	0	Good	None	4		Red trail
886	Oak-Northern Red	24	0	Good	None	4		Red trail
887	Oak-Northern Red	25	0	Good	None	4		Red trail
888	Hickory-Mockernut	10	0	Dead	Remove	1	Dead	Red trail
889	Tulip Tree-Poplar	25	0	Good	None	4		Red trail
890	Oak-Southern Red	14	0	Dead	Remove	1	Dead	Red trail
891	Oak-Northern Red	26	0	Good	None	4		Red trail
892	Oak-Southern Red	28	0	Dead	Remove	1	Dead	Red trail
893	Oak-Northern Red	22	0	Dead	Remove	1	Dead	Red trail
894	Sweetgum	15	0	Dead	Remove	1	Dead	Red trail
895	Oak-White	26	0	Good	None	4		Red trail
896	Tulip Tree-Poplar	31	0	Good	None	4		Red trail
897	Oak-White	31	0	Fair	None	4	Area of decay at base	Red trail
898	Sourwood	9	0	Good	None	4		Red trail
899	Sourwood	6	0	Good	None	4		Red trail
900	Sourwood	10	0	Dead	Remove	1	Dead	orange trail
901	Oak-White	24	0	Fair	Prune Deadwood	2	Dead limbs over trail	Orange trail
902	Oak-White	32	0	Good	None	4		Orange trail
903	Oak-White	26	0	Good	None	4		Orange trail
904	Sourwood	8	0	Good	None	4		Orange trail
905	Oak-White	10	0	Dead	Remove	1	Dead	Orange trail
906	Oak-White	24	0	Good	None	4		Orange trail
907	Sourwood	6	0	Good	None	4		Orange trail
908	Sourwood	6	0	Good	None	4		Orange trail
909	Beech-American	24	0	Fair	None	4	Two buttress roots with decay	Near creek and orange trail
910	Oak-Northern Red	23	0	Poor	Remove	1	Cavity with decay in lower trunk	Near creek and orange trail
911	Oak-White	27	0	Good	None	4		creek bank near bridge orange/white trail
912	Oak-White	24	0	Good	None	1		Near wildcat bridge
913	Tulip Tree-Poplar	27	0	Good	None	4		White trail
914	Oak-White	27	0	Good	None	4		White trail
915	Pine-Loblolly	15	0	Dead	Remove	1	Dead	White trail
916	Pine-Loblolly	14	0	Dead	Remove	1	Dead	White trail
917	Pine-Loblolly	12	0	Dead	Remove	1	Dead	White trail
914	Oak-White	27	0	Good	None	4		White trail
919	Hickory	10	0	Dead	Remove	1	Dead	White path
920	Tulip Tree-Poplar	50	0	Good	None	4		White trail
921	Dogwood-Flowering	6	0	Dead	Remove	1	Dead	White trail
922	Pine-Loblolly	12	0	Dead	Remove	1	Dead	White trail
923	Black Locust	15	0	Poor	Remove	1		White trail
924	Magnolia-Southern	24	0	Good	None	4		End of white trail
925	Maple-Red	37	0	Fair	Cable	3		Info box\teaching area near garden
926	Cherry-Black	24	0	Poor	Remove Vines	1	Tree canopy is covered in wisteria	Near training area\info box
927	Hickory	17	0	Dead	Remove	1	Dead	Near chain link fence near info box
928	Tulip Tree-Poplar	30	0	Fair	None	4	Asymmetrical canopy	Chain link fence behind info box
929	Tulip Tree-Poplar	24	0	Good	Remove Vines	2	Covered in vines	Behind raised bed garden

Tree #	Species	DBH	DBH2	Vitality	Mtnc Rec	Mtnc Prior	Comments	Location
930	Tulip Tree-Poplar	25	0	Good	None	4		Between raised beds and road
931	Oak-Post	13	0	Poor	Remove	1	Severe trunk decay	Left of entrance
932	Sourwood	13	0	Good	None	4		Right of paved road near parking lot
933	Dogwood-Flowering	7	0	Good	None	4		Right of paved road
934	Tulip Tree-Poplar	27	0	Fair	None	4	Lean	Bee boxes
935	Tulip Tree-Poplar	34	0	Good	None	4	Poison ivy	Bee box
936	Tulip Tree-Poplar	25	0	Good	None	4		Parking lot

CITY OF DUNWOODY

Removal Schedule

Dunwoody Nature Center

Tree #	Species	DBH	DBH2	Vitality	Mtn Rec	Mtn Prior	Comments	Location
469	Pine-Loblolly	12	0	Dead	Remove	1	Hazard	DNC-orange trail
472	Hickory	14	0	Dead	Remove	1	Hazard	DNC-orange trail
474	Oak-Southern Red	14	0	Poor	Remove	1	Hazard	DNC-orange trail
475	Pine-Loblolly	12	0	Dead	Remove	1	Hazard	DNC-red trail
476	Hickory	13	0	Poor	Remove	1	Leaning over trail with cavity in base	DNC-red trail
477	Pine-Loblolly	18	0	Poor	Remove	1	Large canker in lower trunk	DNC-red and orange trail crossing
478	Oak-Southern Red	18	22	Dead	Remove	1	Hazard	DNC-red trail
479	Oak-Southern Red	31	0	Dead	Remove	1	Hazard	DNC-red trail
481	Tulip Tree-Poplar	20	0	Poor	Remove	1	60 % of base decayed, large cavity	DNC-white trail
852	Pine-Loblolly	14	0	Dead	Remove	1	Dead	Yellow trail
856	Dogwood-Flowering	3	0	Dead	Remove	1	Dead	Yellow trail
857	Pine-Loblolly	18	0	Dead	Remove	1	Dead	Yellow trail
858	Pine-Loblolly	18	0	Dead	Remove	1	Dead	Red trail
859	Pine-Loblolly	18	0	Poor	Remove	1	Lower trunk significantly decayed	Orange trail
860	Sweetgum	15	0	Dead	Remove	1	Dead	Orange trail
861	Pine-Loblolly	12	0	Dead	Remove	1	Dead	Orange trail
862	Pine-Loblolly	12	0	Dead	Remove	1	Dead	Orange trail
870	Oak-White	20	0	Dead	Remove	1	Dead	Orange trail
888	Hickory-Mockernut	10	0	Dead	Remove	1	Dead	Red trail
890	Oak-Southern Red	14	0	Dead	Remove	1	Dead	Red trail
892	Oak-Southern Red	28	0	Dead	Remove	1	Dead	Red trail
893	Oak-Northern Red	22	0	Dead	Remove	1	Dead	Red trail
894	Sweetgum	15	0	Dead	Remove	1	Dead	Red trail
900	Sourwood	10	0	Dead	Remove	1	Dead	orange trail
905	Oak-White	10	0	Dead	Remove	1	Dead	Orange trail
910	Oak-Northern Red	23	0	Poor	Remove	1	Cavity with decay in lower trunk	Near creek and orange trail
915	Pine-Loblolly	15	0	Dead	Remove	1	Dead	White trail
916	Pine-Loblolly	14	0	Dead	Remove	1	Dead	White trail
917	Pine-Loblolly	12	0	Dead	Remove	1	Dead	White trail
919	Hickory	10	0	Dead	Remove	1	Dead	White path
921	Dogwood-Flowering	6	0	Dead	Remove	1	Dead	White trail
922	Pine-Loblolly	12	0	Dead	Remove	1	Dead	White trail
923	Black Locust	15	0	Poor	Remove	1		White trail
927	Hickory	17	0	Dead	Remove	1	Dead	Near chain link fence near info box
931	Oak-Post	13	0	Poor	Remove	1	Severe trunk decay	Left of entrance

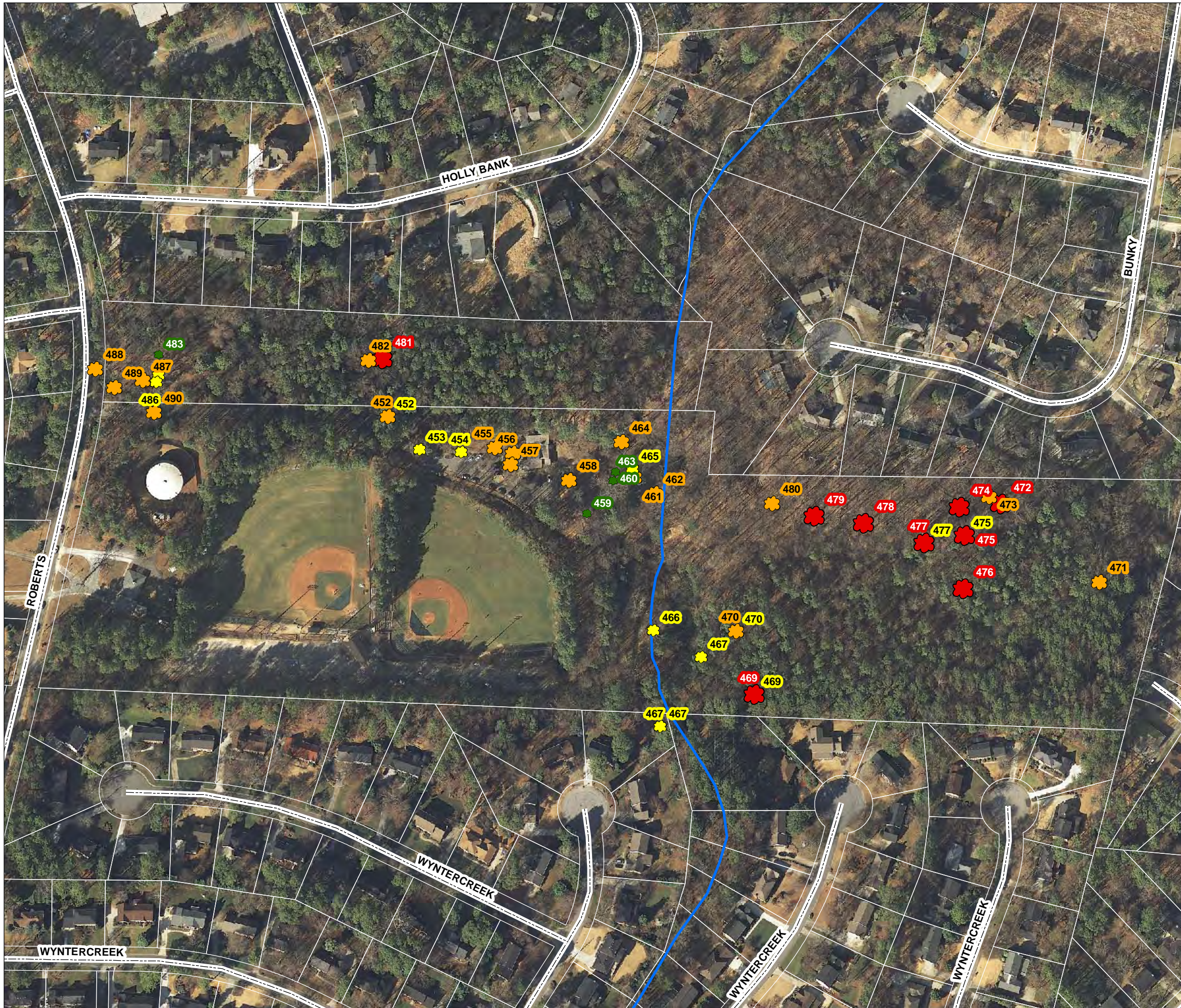
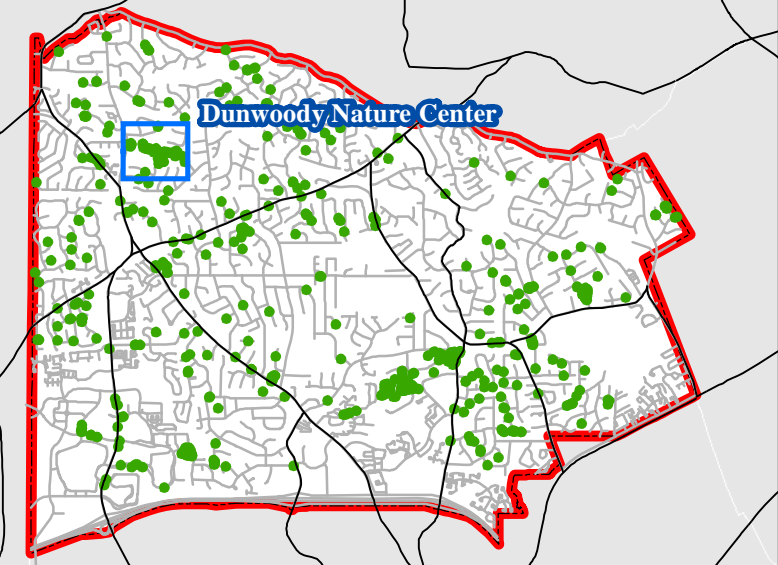
Tree #	Species	DBH	DBH2	Vitality	Mtnc Rec	Mtnc Prior	Comments	Location
452	Pine-Loblolly	30	0	Fair	Prune deadwood	2	Canker at 2 feet high, deadwood stubs.	DNC driveway
455	Tulip Tree-Poplar	32	0	Fair	Prune deadwood	2	Deadwood, tip dieback	DNC entrance
456	Dogwood-Flowering	12	0	Fair	Prune deadwood	2	Deadwood over sidewalk	DNC entrance
457	Maple-Red	27	0	Fair	Cable	2	Multi stem with weak union and included bark	DNC entrance
458	Sweetgum	32	0	Fair	Prune deadwood	2	Deadwood over trail	DNC trailhead
461	Tulip Tree-Poplar	24	0	Fair	Prune deadwood	2	Dead scaffold over trail	DNC trailhead
462	Oak-White	27	0	Fair	Cable	2	Codominant at 10 ft. weak union, included bark	DNC trailhead
464	Tulip Tree-Poplar	30	0	Fair	Prune deadwood	2	Wounds on trunk at base, deadwood	DNC trailhead
465	Pine-Loblolly	30	0	Fair	Prune deadwood	3	Deadwood, codominant at 30 feet	DNC trailhead
467	Pine-Loblolly	14	0	Fair	Prune deadwood	3	Dead limbs over seats	DNC trail behind kiosk
468	Tulip Tree-Poplar	24	0	Fair	Prune deadwood	2	Dead limbs over trail	DNC-orange trail
471	Tulip Tree-Poplar	30	0	Fair	Prune deadwood	2	Dead limbs over trail	DNC-orange trail
473	Oak-White	32	0	Fair	Prune deadwood	2	Dead limbs over trail	DNC-orange trail
480	Oak-White	31	0	Fair	Prune deadwood	2	Deadwood, trunk wound at base	DNC-white trail
482	Oak-White	20	0	Fair	Prune deadwood	2	Large dead scaffold over trail	DNC-white trail at bridge
487	Oak-Southern Red	27	0	Fair	Prune deadwood	2	Asymmetrical canopy, deadwood	DNC-white trail at meadow
488	Oak-Southern Red	26	0	Fair	Prune deadwood	2	Deadwood	DNC-white trail at meadow
489	Oak-Southern Red	34	0	Fair	Prune deadwood	2	Sparse canopy, deadwood	DNC-white trail at meadow
490	Oak-Southern Red	32	0	Fair	Cable	2	Codominant at 7ft	DNC- driveway entrance
846	Tulip Tree-Poplar	40	0	Fair	Prune Deadwood	3	Specimen	DNC trailhead
848	Pine-Loblolly	40	0	Fair	Prune Deadwood	3	Dead limbs over trail	DNC Trail head
867	Sourwood	8	0	Fair	Remove Vines	3	20° lean, vines	Orange trail
868	Sourwood	10	0	Good	Remove Vines	4	Vines	Orange trail
874	Tulip Tree-Poplar	37	0	Fair	Cable	3	Co-dominant	Orange trail
876	Tulip Tree-Poplar	30	0	Fair	Cable	4	Co-dominant	Orange trail
901	Oak-White	24	0	Fair	Prune Deadwood	2	Dead limbs over trail	Orange trail
925	Maple-Red	37	0	Fair	Cable	3		Info box\teaching area near garden
926	Cherry-Black	24	0	Poor	Remove Vines	1	Tree canopy is covered in wisteria	Near training area\info box
929	Tulip Tree-Poplar	24	0	Good	Remove Vines	2	Covered in vines	Behind raised bed garden



Tree #	Species	DBH	DBH2	Vitality	Mtnc Rec	Mtnc Prior	Comments	Location
453	Tulip Tree-Poplar	30	0	Fair	Soil therapy	3	Tip dieback	DNC driveway
454	Tulip Tree-Poplar	29	0	Fair	Soil therapy	3	Tip dieback	DNC driveway
466	Tulip Tree-Poplar	28	0	Fair	Soil therapy	3	Tip dieback	DNC trail boardwalk
470	Pine-Loblolly	23	0	Poor	Insecticide sprays	2	Boring beetles	DNC-orange trail at playground
484	Tulip Tree-Poplar	24	0	Fair	Soil therapy	3	Crooked trunk, sparse canopy	DNC-white trail at meadow
485	Oak-Southern Red	30	0	Fair	Soil therapy	3	Asymmetrical canopy, sparse foliage	DNC-white trail at meadow
486	Oak-Southern Red	27	0	Fair	Soil therapy	3	Asymmetrical canopy, sparse foliage	DNC-white trail at meadow

# Maintenance Priority

City of Dunwoody



## Maintenance Priority Level

Dunwoody Nature Center



Priority 1



Priority 2



Priority 3



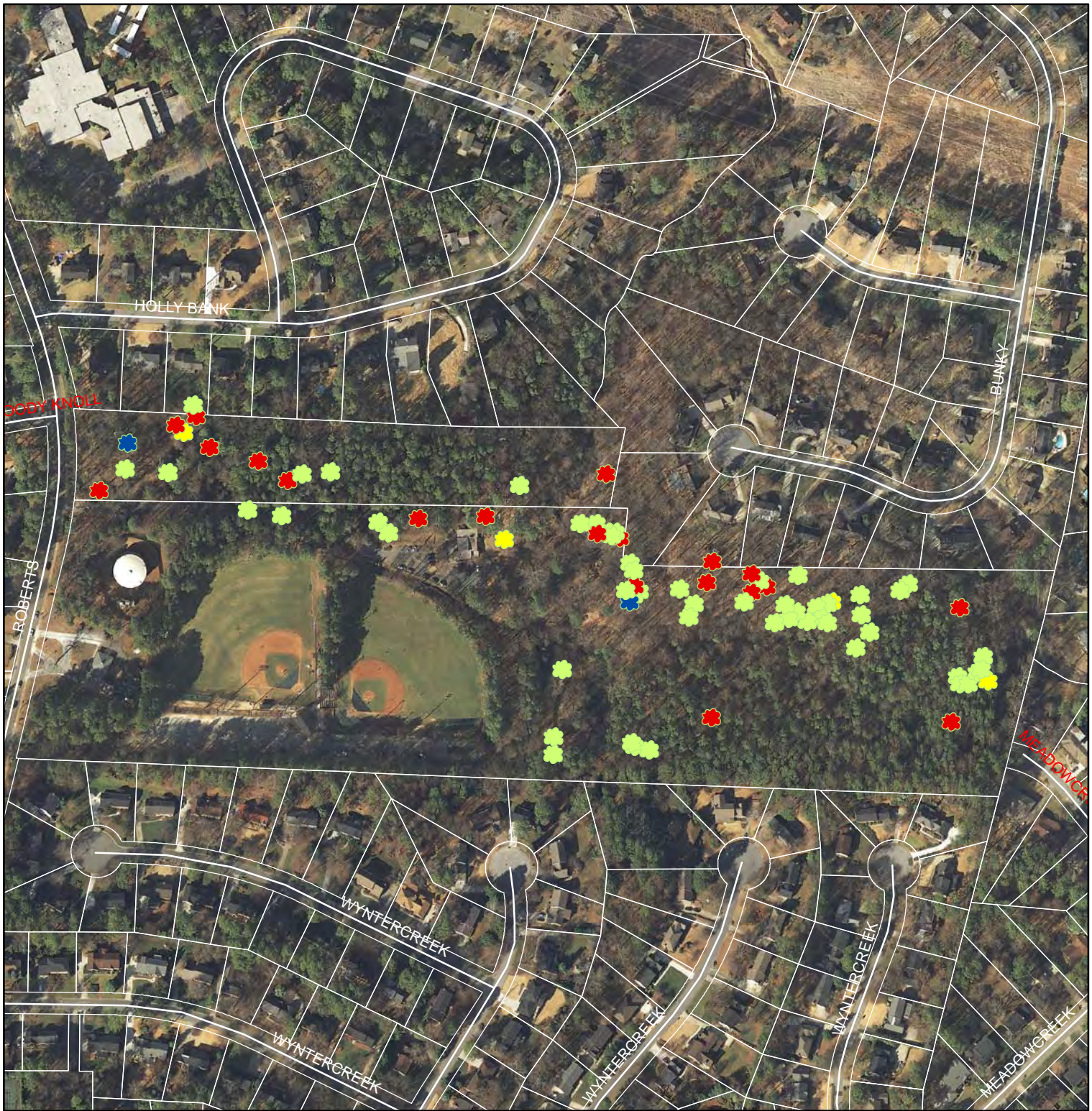
Priority 4

### Legend

- Roads
- Railroads
- ▭ Parcels
- ▭ Lakes / Water Features

1 inch = 200 feet

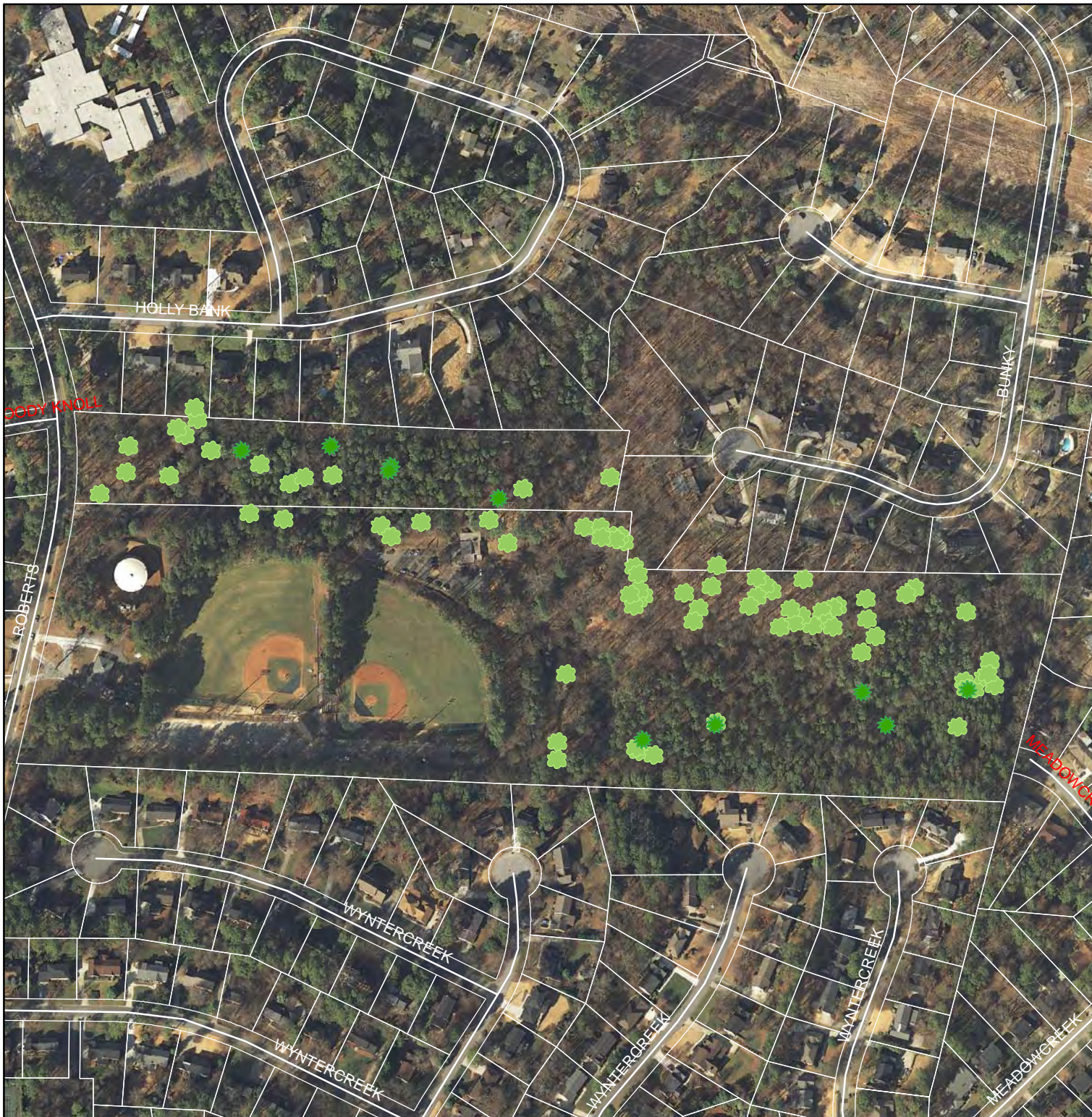






## Nature Center

### Maintenance Priorities

-  1
-  2
-  3
-  4



## Nature Center

-  Nature Center Softwood
-  Nature Center Hardwood