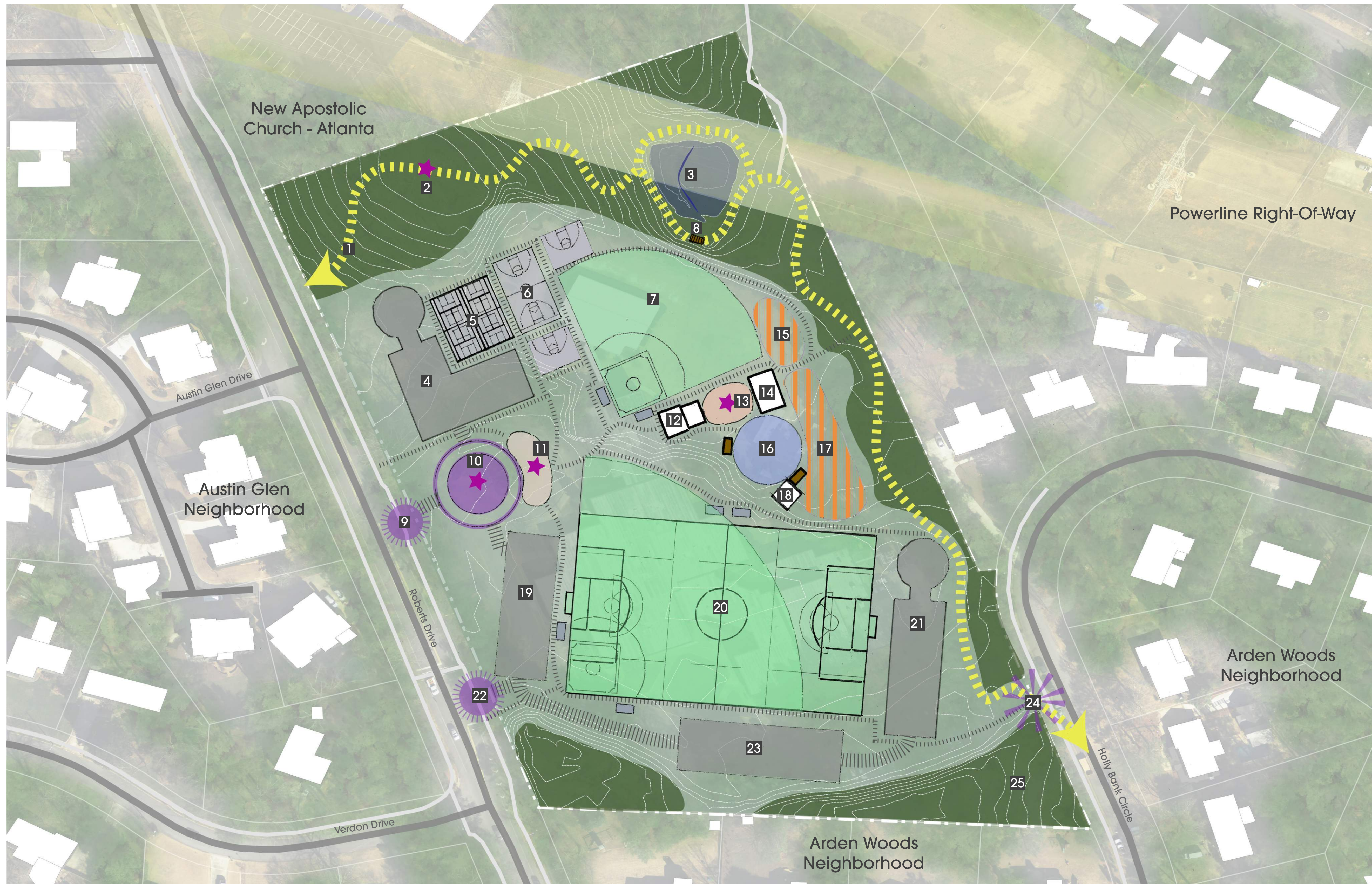
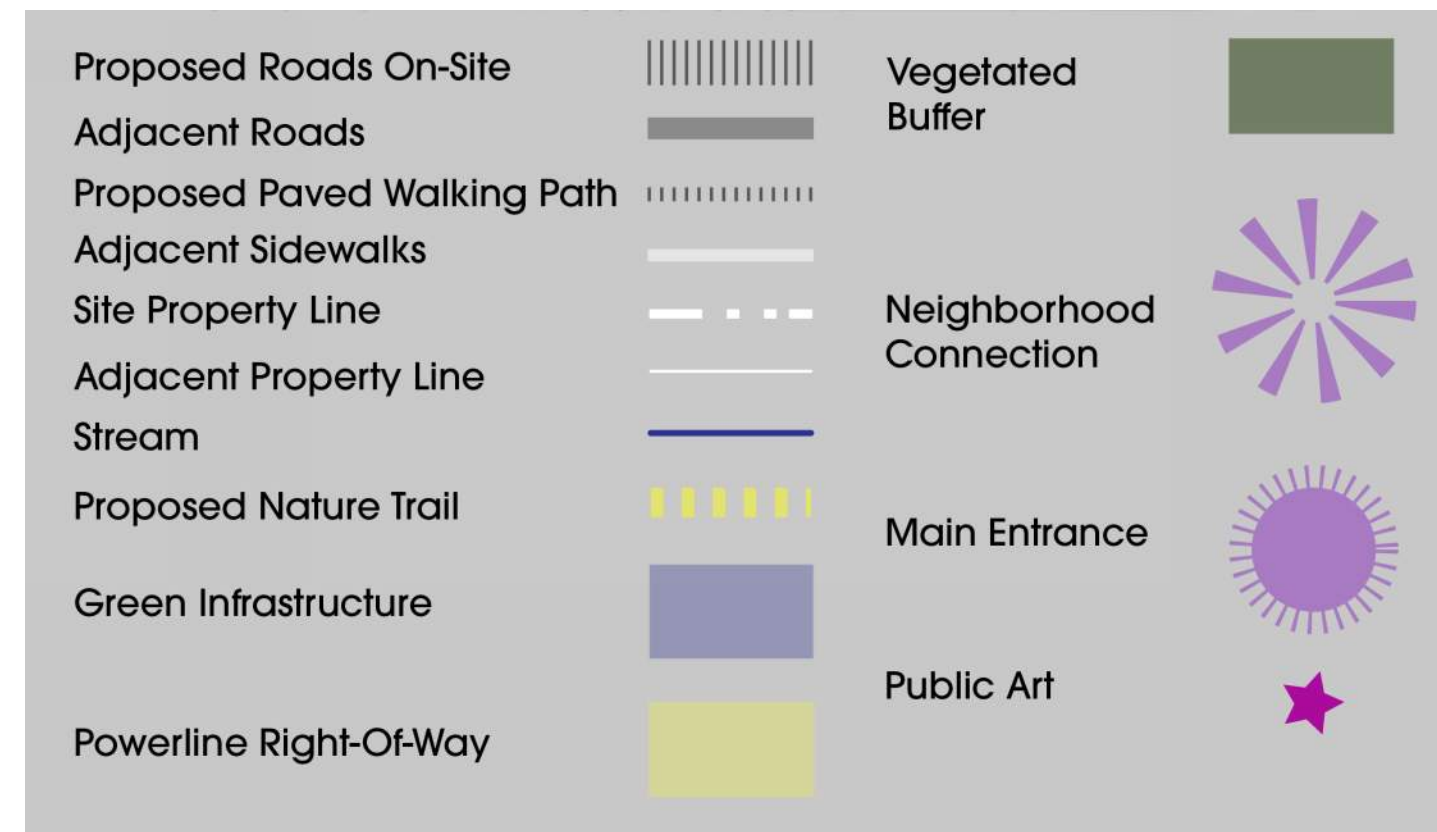


MASTER PLAN CONCEPTS - 5435 ROBERTS DRIVE

CONCEPT 1

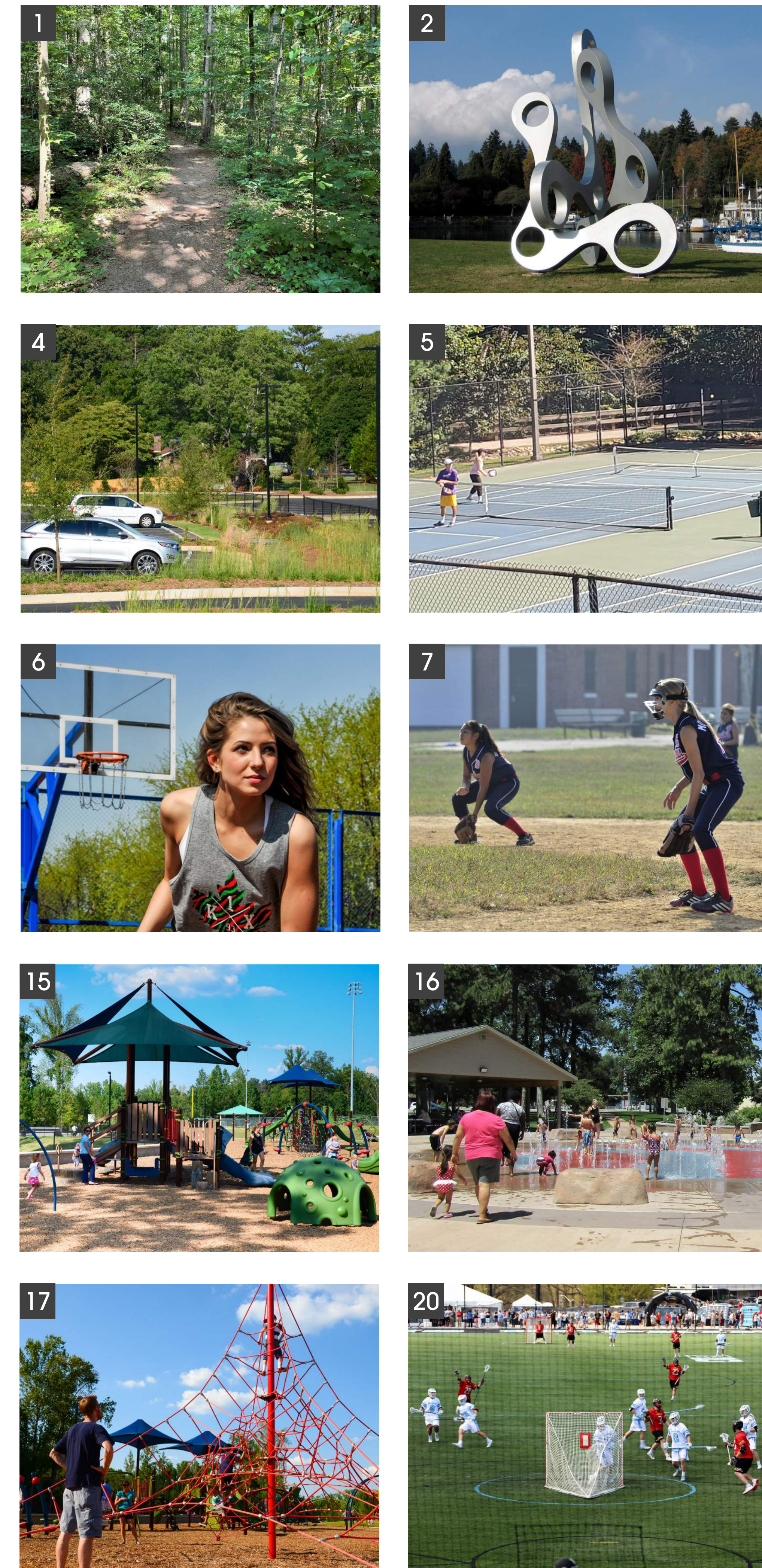


Total Parking = 147 spaces
Total Park Acreage = 9.8 ac



1. Nature trail (1,460 ft., 0.27 mile)
2. Public art
3. Interpretive green infrastructure and trail
4. Parking area (35 spaces) with green infrastructure and turn around
5. (2) Tennis/ (4) Pickleball multi-use courts (78 ft. x 36 ft.)
6. Basketball courts (2 half courts, 1 full-sized court (84 ft. x 50 ft. full-size))
7. Softball field (Junior/Senior League (12-16 YO))
8. Overlook - green infrastructure
9. Main entrance
10. Vehicular drop-off circle with public art
11. Entry plaza with public art
12. Concession stand with restrooms
13. Plaza with public art
14. Pavilion (44 ft. x 30 ft.)
15. Younger childrens' playground (2-5 YO, 4,300 sq. ft.)
16. Splash pad (80 ft. dia., 5,000 sq. ft.) with (2) family-sized pavilions
17. Multi-level older childrens' playground (6-12 YO, 9,500 sq. ft.)
18. Splash pad pump house
19. Parking Area (40 spaces)
20. Soccer/lacrosse/adult softball multi-use field (345 ft. x 210 ft.)
21. Parking area (32 spaces) with turn around
22. Secondary entrance
23. Parking area (40 spaces)
24. Neighborhood pedestrian connection
25. Existing vegetated buffer to remain

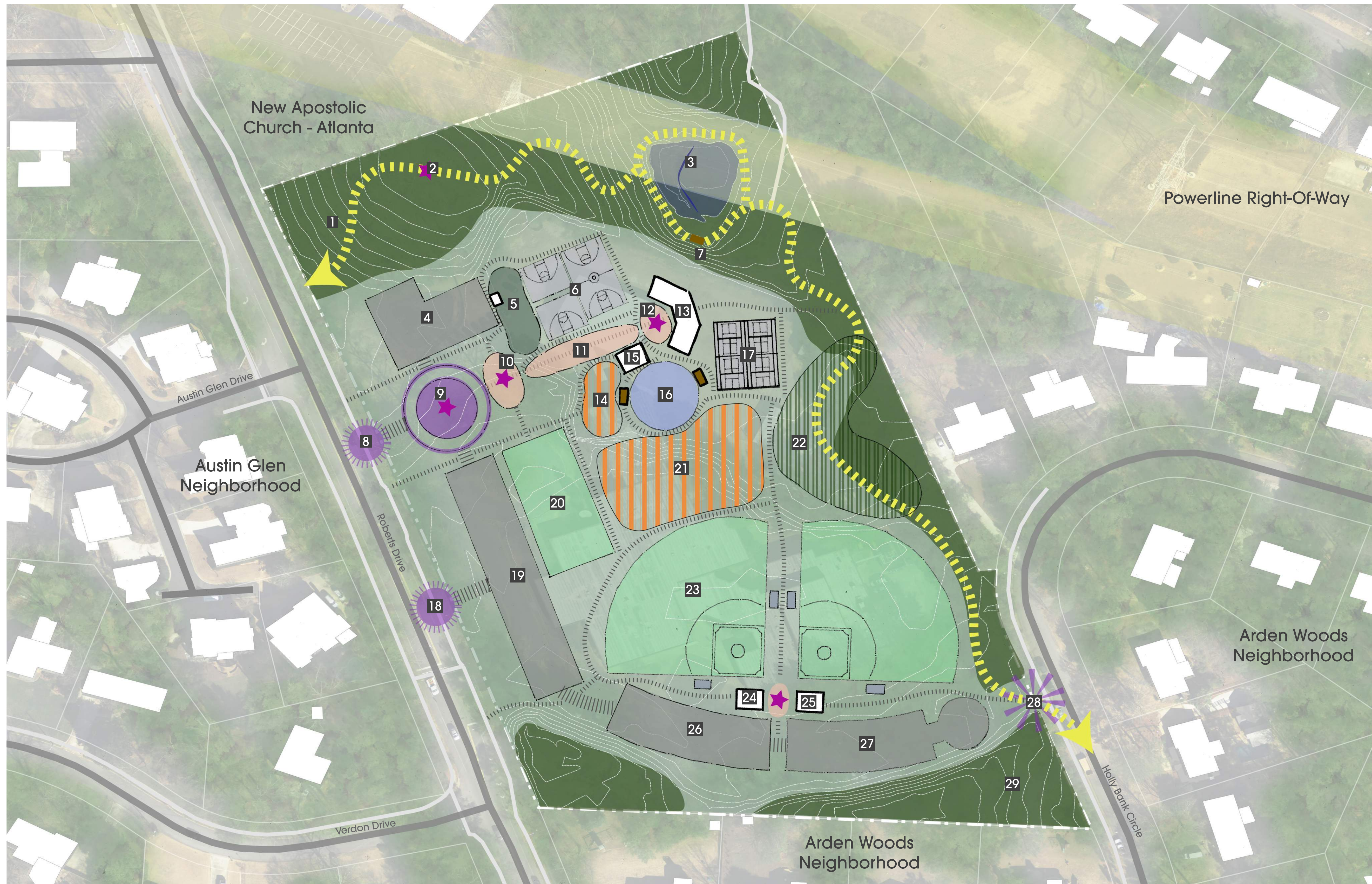
EXAMPLE IMAGES



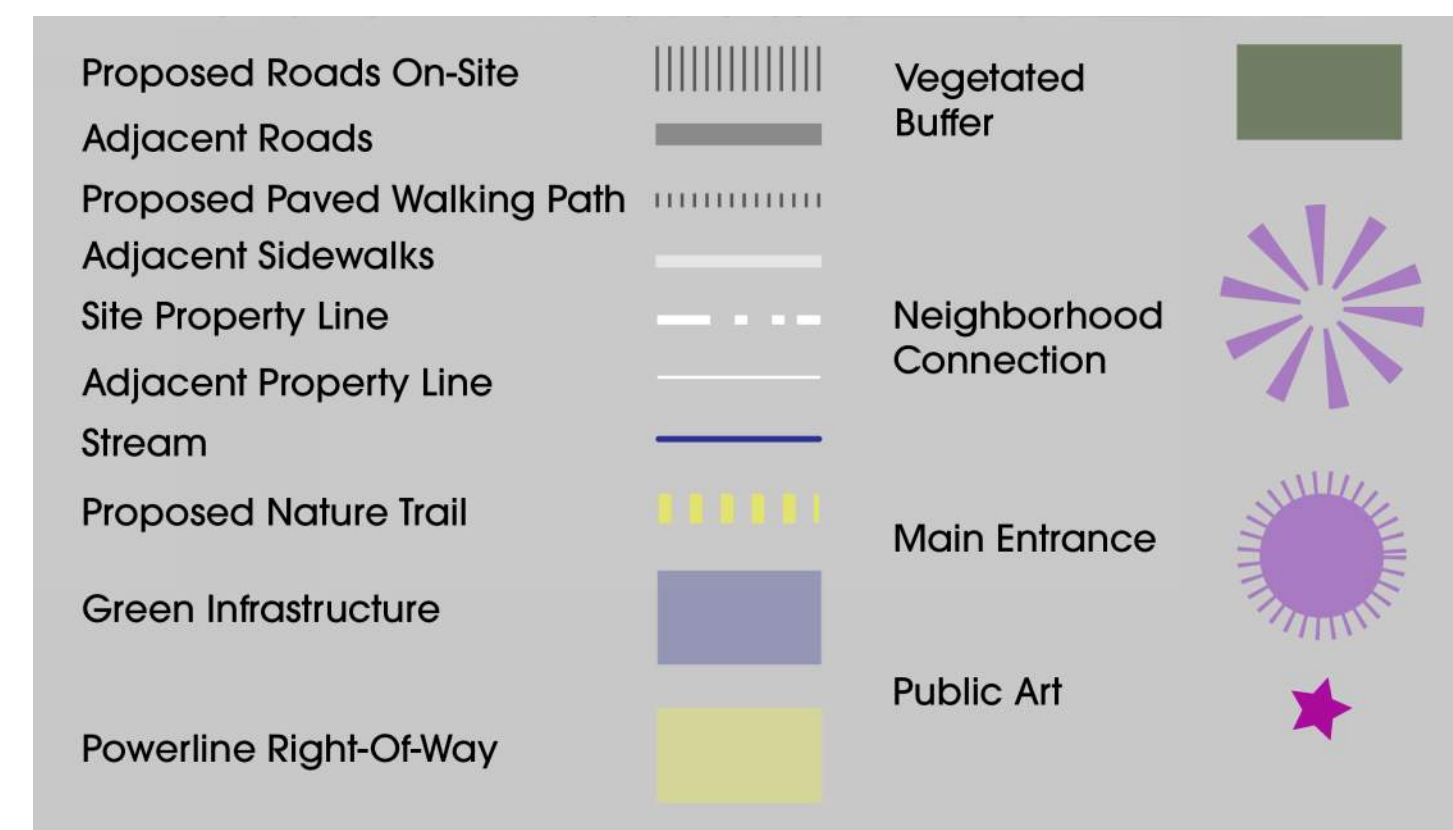
Note: Photos are for representative example use only. Actual facilities and structures will vary.

MASTER PLAN CONCEPTS - 5435 ROBERTS DRIVE

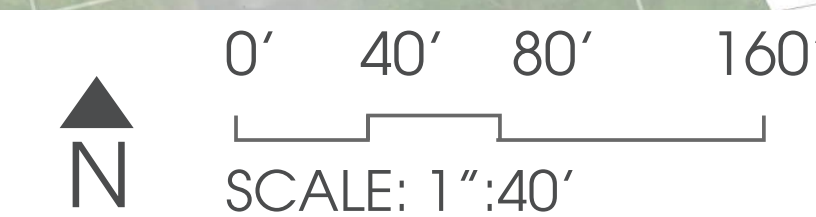
CONCEPT 2



Total Parking = 158 spaces
Total Park Acreage = 9.8 ac



- | | | |
|--|---|---|
| 1. Nature trail (1,430 ft., 0.27 mile) | 8. Main entrance | 16. Splash pad (80 diameter, 5,000 sq. ft.) with (2) family-sized pavilions |
| 2. Public art | 9. Vehicular drop-off circle with public art | 17. (2) Tennis/(4) Pickleball multi-use courts (78 ft. x 36 ft.) |
| 3. Interpretive green infrastructure and trail | 10. Entry plaza with public art | 18. Secondary entrance |
| 4. Parking area (29 spaces) | 11. Central promenade | 19. Parking area (58 spaces) |
| 5. Community garden with storage shed (4,000 sq. ft.) | 12. Plaza with public art, typ. | 20. Open play field (160 ft. x 80 ft.) |
| 6. Basketball courts (2 half courts, 1 full-sized court (84 ft. x 50 ft. full-size)) | 13. Concession stand with restrooms and splash pad pump house | 21. Multi-level older childrens' playground (6-12 YO, 18,500 sq. ft.) |
| 7. Overlook - green infrastructure | 14. Younger childrens' playground (2-5 YO, 4,000 sq. ft.) | 22. Nature play area (22,150 sq. ft.) |
| | 15. Pavilion (44 ft. x 30 ft.) | |
| | | 23. Softball field, typ. (Junior/Senior League, 12-16 YO) |
| | | 24. Concession stand |
| | | 25. Restrooms |
| | | 26. Parking Area (37 spaces) |
| | | 27. Parking Area (34 spaces) |
| | | 28. Neighborhood pedestrian connection |
| | | 29. Existing vegetated buffer to remain |



EXAMPLE IMAGES



Note: Photos are for representative example use only. Actual facilities and structures will vary.