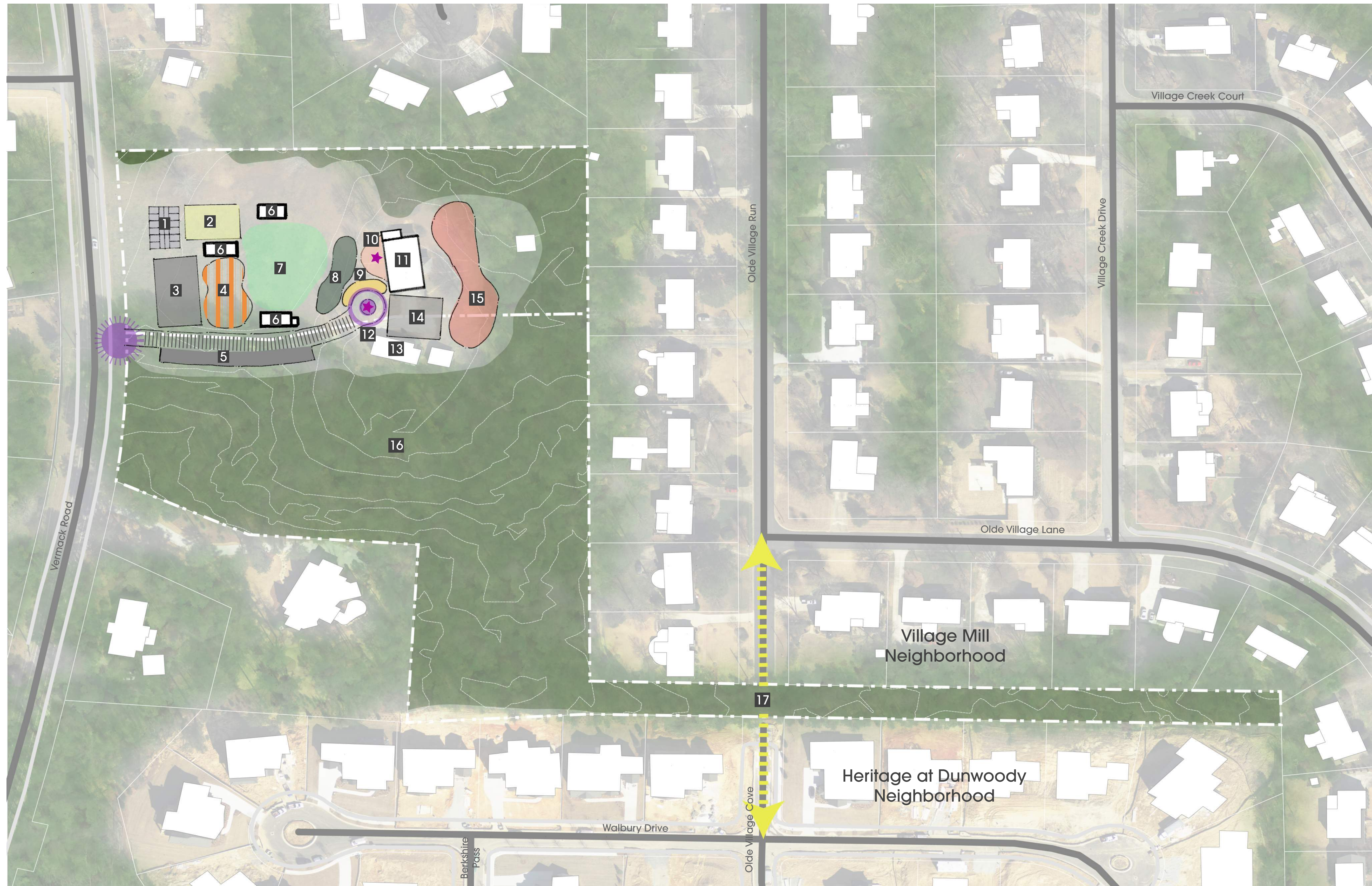
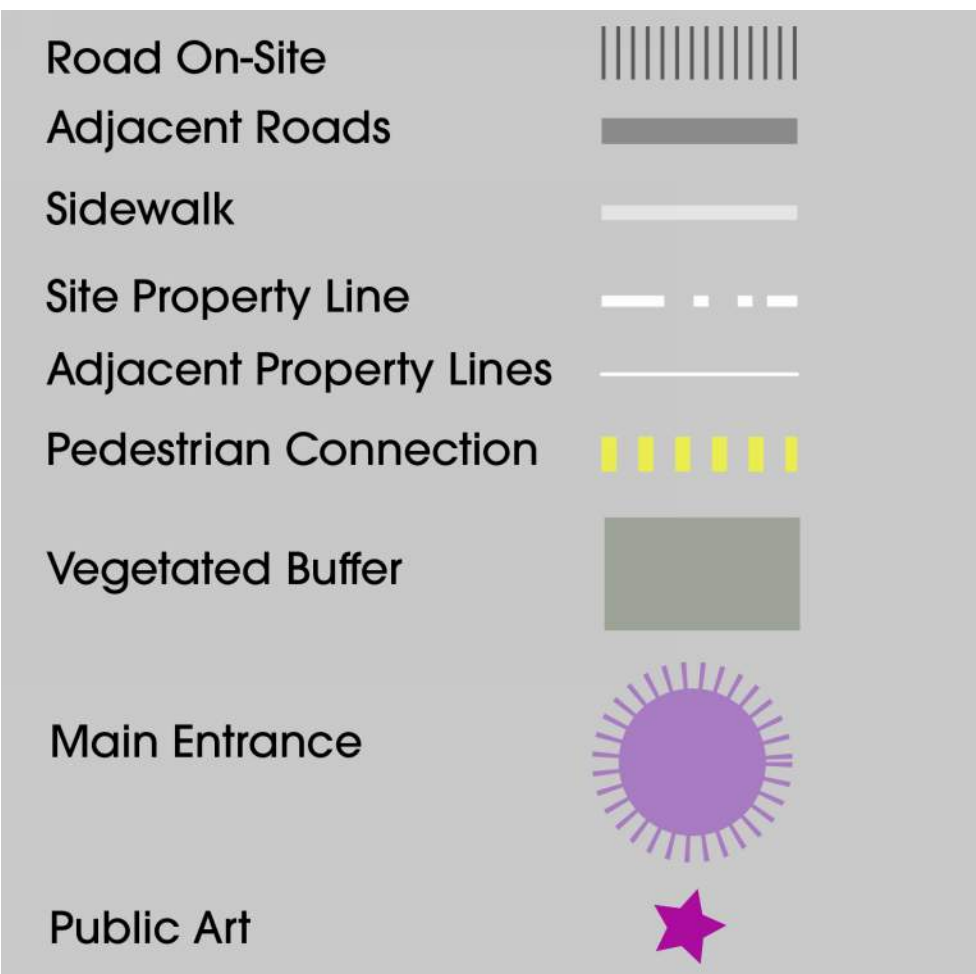


MASTER PLAN CONCEPTS - 4809/4819 VERMACK ROAD

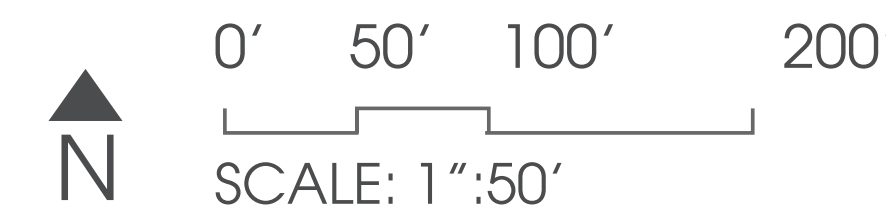
CONCEPT 1



Total Parking = 59 spaces
Total Park Acreage = 9.3 ac



- | | | |
|---|--|---|
| 1. (3) pickleball courts (44 ft. x 20 ft. each court) | 7. Open play field (130 ft. x 100 ft., 13,000 sq. ft.) | 13. Convert existing farmhouse to Dunwoody Parks satellite office (1,008 sq. ft.) |
| 2. Sand volleyball court (60 ft. x 30 ft.) | 8. Community garden (3,300 sq. ft.) with storage shed | 14. Parking area (16 spaces) |
| 3. Parking area (20 spaces) | 9. Solar array | 15. Septic area |
| 4. Sensory playground (6-12 YO children, 5,000 sq. ft.) | 10. Patio flex space (1,900 sq. ft.) | 16. Existing vegetated buffer to remain |
| 5. Parking Area (23 spaces) | 11. Large pavilion (60 ft. x 40 ft.) with restrooms | 17. Pedestrian connection between neighborhoods as requested by residents |
| 6. Pavilion (44 ft. x 30 ft.), typical | 12. Vehicular drop-off area with public art | |



EXAMPLE IMAGES



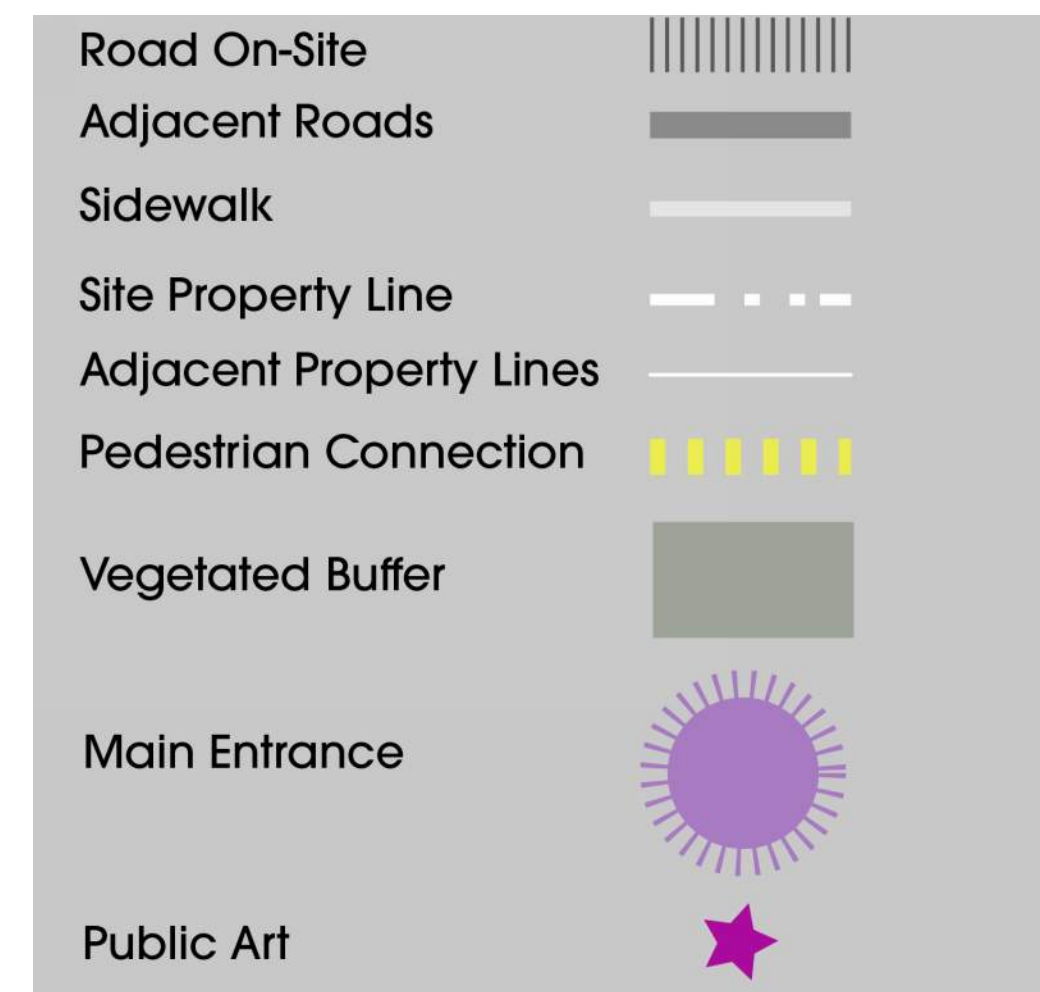
Note: Photos are for representative example use only. Actual facilities and structures will vary.

MASTER PLAN CONCEPTS - 4809/4819 VERMACK ROAD

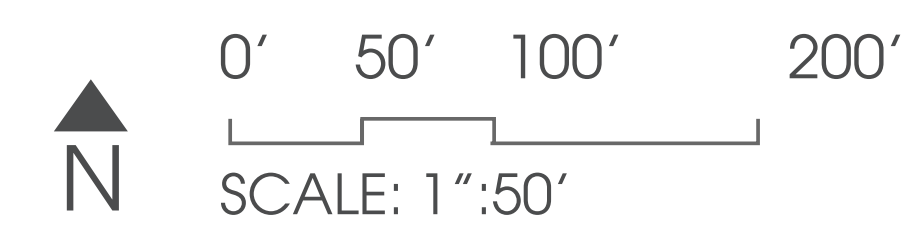
CONCEPT 2



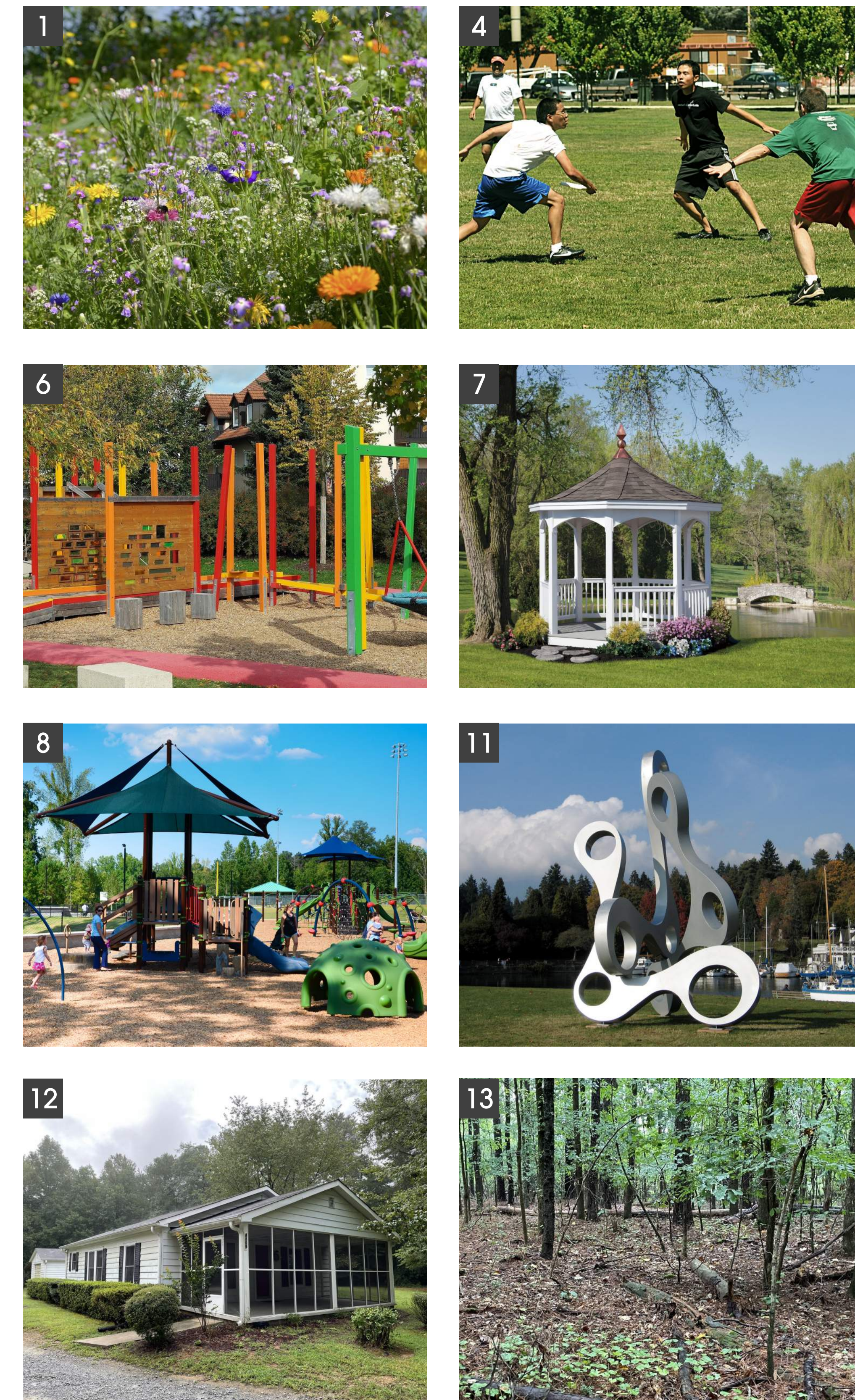
Total Parking = 71 spaces
Total Park Acreage = 9.3 ac



- 1. Wildflower meadow (4,800 sq. ft.)
- 2. Parking area (22 spaces)
- 3. Pavilion (44 ft. x 30 ft.)
- 4. Open play field (260 ft. x 150 ft., 39,000 sq. ft.)
- 5. Parking Area (23 spaces)
- 6. Sensory playground (6-12 YO children, 12,375 sq. ft.)
- 7. Gazebo (18' diameter)
- 8. Younger childrens' playground (2-5 YO, 5,900 sq. ft.)
- 9. Septic area
- 10. Parking area (16 spaces)
- 11. Vehicular drop-off area with public art
- 12. Convert farmhouse to Dunwoody Parks satellite office (1,008 sq. ft.)
- 13. Existing vegetated buffer to remain
- 14. Pedestrian connection between neighborhoods as requested by residents



EXAMPLE IMAGES



Note: Photos are for representative example use only. Actual facilities and structures will vary.