

Tree Assessment

Rochelle Drive Dead End Trail



Submitted by:
Arboguard Tree Specialists
June 2012

Table of Contents

Introduction	1
Species Distribution	2
Diameter Values	3
Vitality Ratings	4
Maintenance Priority Levels	5
Recommendations	6
Appendix A Latin Names	7
Appendix B Data	8

Introduction

A tree assessment was conducted on trees along the trail between the Rochelle Drive dead end and Bishop Hollow Run. Specimen trees along the trail were also located. Specimen tree criteria is defined in the City of Dunwoody Tree Ordinance Section 16-195(h) as follows: hardwood trees ≥ 24 " diameter at breast height (DBH), softwood trees ≥ 30 " DBH and flowering understory trees ≥ 6 " DBH.

There were a total of 9 trees inventoried along the trail. The trees consist of 3 species. The most common tree species is Loblolly Pine. The inventory was completed using GIS and GPS technology. This report is intended to be used as a management tool to sustain and promote healthy trees and improve the environmental quality of the area.

Rochelle Drive Dead End Trail Urban Forest Summary	
Feature	Measure
Number of Trees Surveyed	9
Number of Species	3
Most Common Species	Loblolly Pine
Most common diameter	16"-20" (78% of all trees)
Largest diameter	26"
Condition	Good=0 Fair=8 Poor=1 Dead=0
Maintenance Priority Levels *	1=1 2=3 3=4 4=1

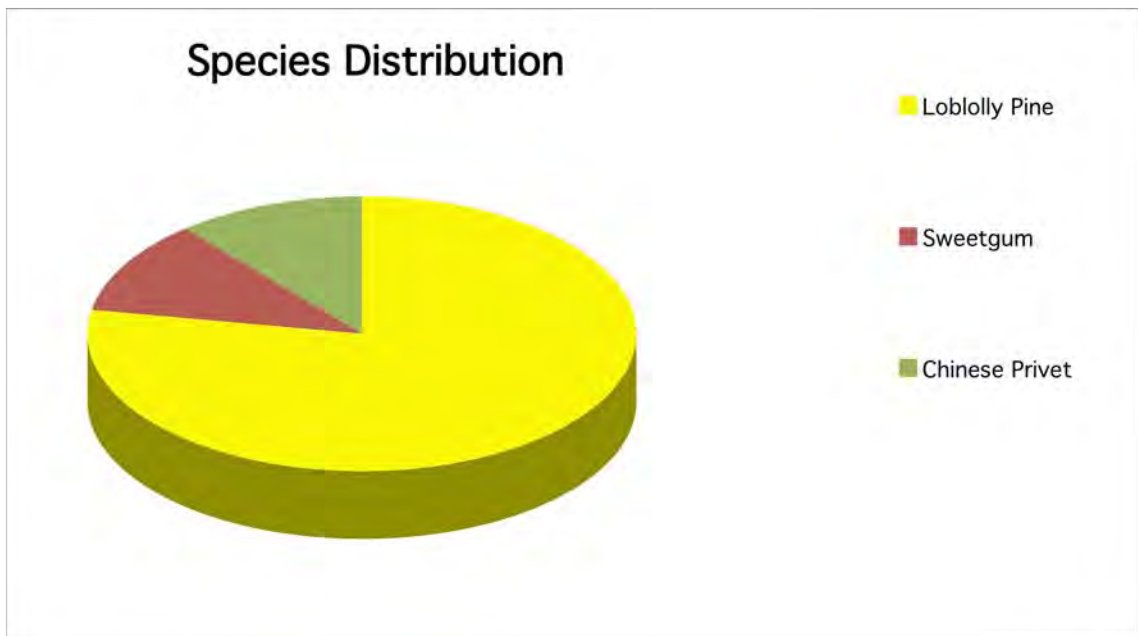
Results

The data from this survey is shown in its entirety in Appendix B of this report. The following information has been taken from the data and summarized where relevant.

(*See page 5 for more information of Maintenance Priority Levels)

Species Distribution

There are 3 different species of tree surveyed along Rochelle Drive Dead End Trail. The predominant species as ranked by their total number as compared to the total trees inventoried are as follows:



Amount of Trees Per Species

Species	Number of Trees
Loblolly Pine	7
Sweetgum	1
Privet	1

Maintenance Priorities

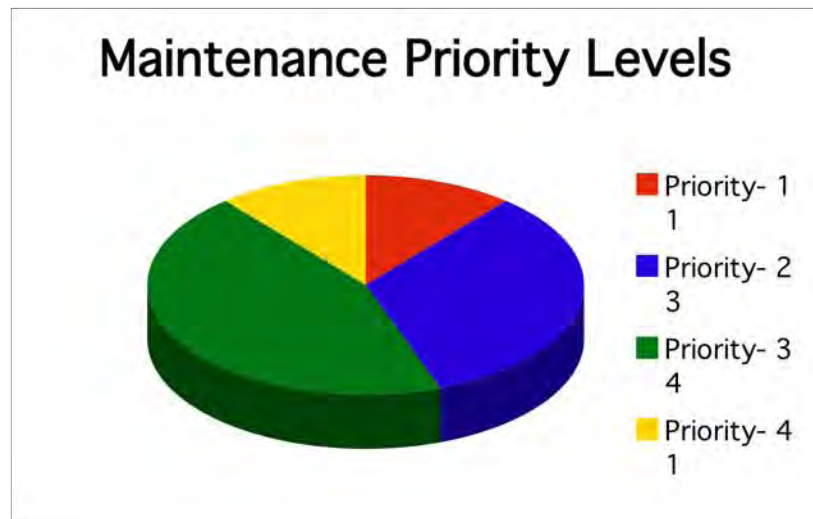
Priority 1= Action is required as soon as possible. These trees may be dead, hazardous, in need of a risk assessment using Resistograph technology or requires pruning or other actions as soon as possible.

Priority 2= These trees will require action in the near future.

Priority 3= Maintenance priorities 1-2 should be addressed before maintenance priority 3.

Priority 4= Maintenance is not required at this time.

Maintenance Priority	Amount
Priority 1	1
Priority 2	3
Priority 3	4
Priority 4	1



Recommendations

This trail is currently an undeveloped wooded tract of land. It is however utilized on a regular basis as a walking trail. The 9 trees identified on this site consist primarily of loblolly pine trees. Although no maintenance would actually be required on this site at this time, there is one privet bush growing into the power line that needs pruning by a Georgia Power subcontractor and then removed should the budget allow for it. The balance of the trees would require cutting the vines on the tree stem and pruning to remove dead branches.

The following budget for tree pruning is reflective of standard tree care rates typical of fully insured and highly qualified local arborists. It is expected that to satisfactorily complete this work it will require a time budget of approximately 1 day.

Prune dead limbs and cut vines on 7 loblolly pine trees, remove one privet bush:

- Labor: \$1950

Total estimated removal budget: \$1950

Appendix A

Common Name – Latin Name Key

Trees – Common Name	Latin Name	Native/Adaptive
Loblolly Pine	<i>Pinus taeda</i>	YES
Sweetgum	<i>Liquidambar styraciflua</i>	YES
Chinese Privet	<i>Ligustrum sinensis</i>	NO

Appendix B

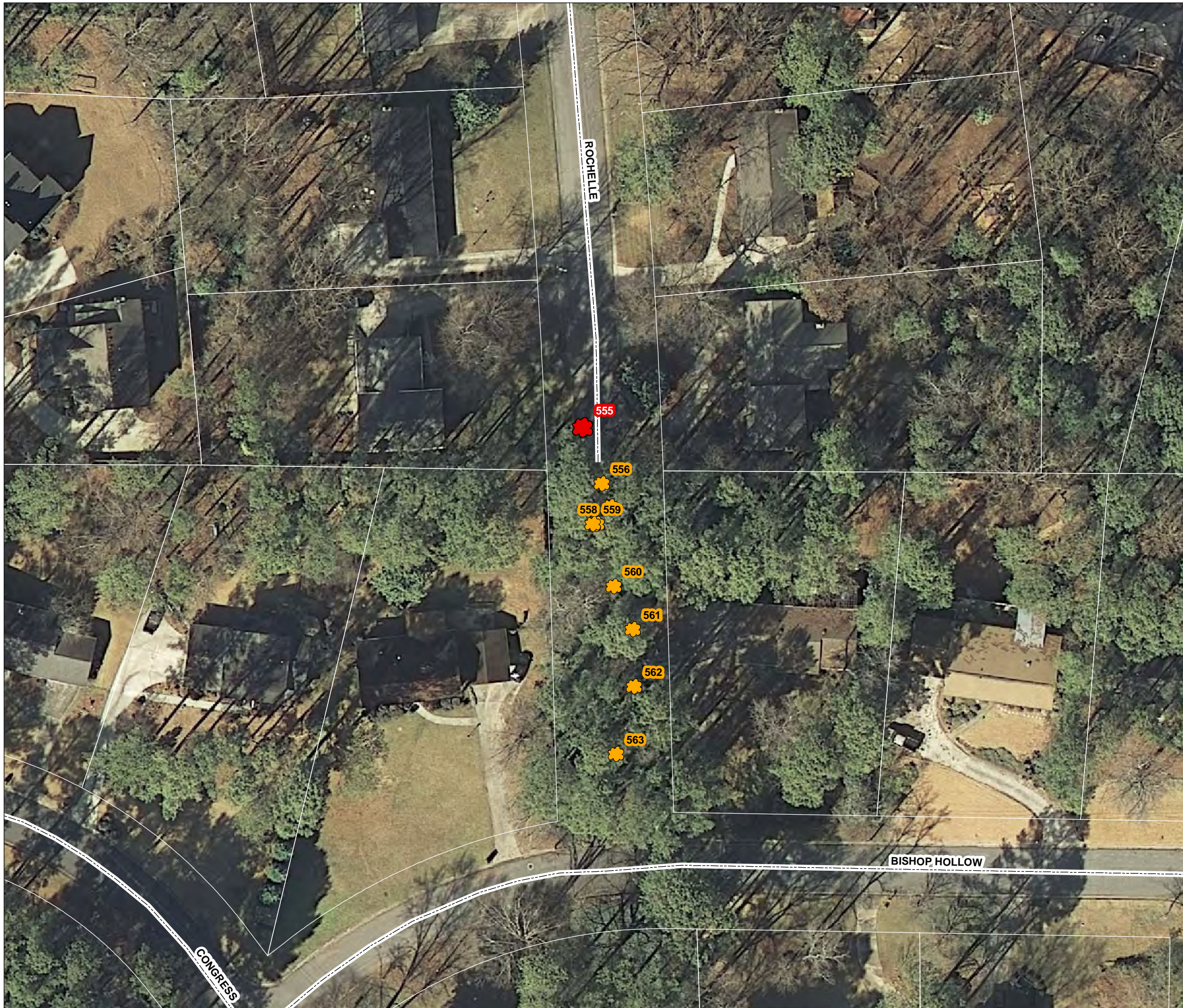
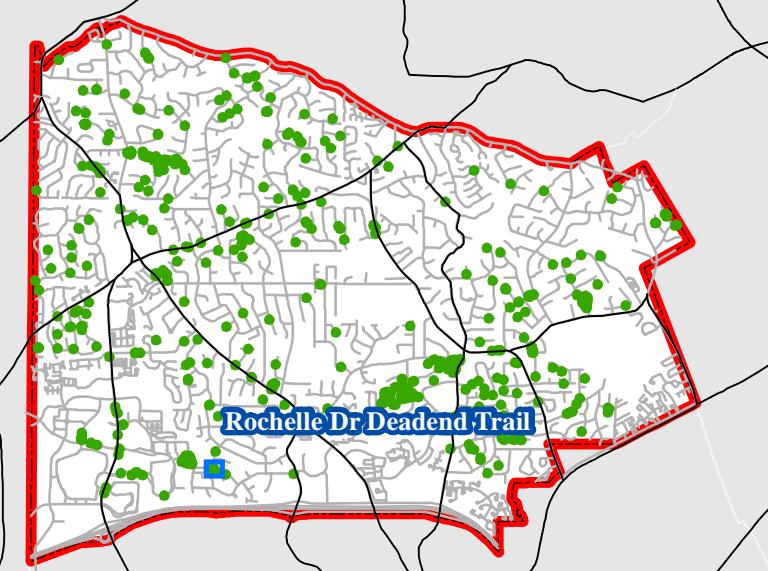
The inventory is a compilation of information gathered about the trees. All specimen trees were located utilizing GPS technology and the following data parameters recorded for each tree.

Term	Description
Tree No.	All trees were numbered with an aluminum tag bearing a unique number and located using a GPS system.
Species	Listed as the North American common name.
DBH	Diameter of trunk in inches, measured at 4.5' feet above average soil level. Measurements were taken using a forestry diameter tape.
Vitality	<p>Good Tree has excellent vigor and is actively growing without any serious pathogenic problems. Tree exhibits a structural form that is safe and typical of the species.</p> <p>Fair Tree is in moderate health, but may have a minor pathogenic problem. Some insects and disease could be present. Tree may have minor structural defects, but does not exhibit optimal form for the species in an urban environment. A tree in fair condition may not react favorably to site developments or additional stress.</p> <p>Poor Tree's vigor is low to moderate. It may also have moderate to severe structural defects or a form that is undesirable for the species. Some trees in poor condition are not recoverable and could degrade into a state of advanced decline leading to death.</p>
Maintenance Recommendations	Any maintenance needed; such as pruning, soil therapy, install cables or removal.
Maintenance Priority	Urgency of the required maintenance rated from 1 to 4.
Comments	Any other additional notes about the tree that were not adequately addressed in the other fields.
Location	Specifies where the trees can be found such as by address or approximate location in a park.

Tree #	Species	DBH	DBH2	Vitality	Mtnc Rec	Mtnc Prior	Comments	Location
555	Privet	6	6	Poor	Removal	1	Growing into utility lines	Trail between Rochelle Dr. and Bishop Hollow Run
556	Pine-Loblolly	14	0	Fair	Remove Vines	3	Vines on trunk	Trail between Rochelle Dr. and Bishop Hollow Run
557	Pine-Loblolly	21	0	Fair	Prune-Deadwood, remove vines	3	Vines on trunk, Deadwood	Trail between Rochelle Dr. and Bishop Hollow Run
558	Pine-Loblolly	12	0	Fair	Prune-Deadwood, remove vines	3	Vines on trunk, Deadwood	Trail between Rochelle Dr. and Bishop Hollow Run
559	Pine-Loblolly	18	0	Fair	Prune-Deadwood, remove vines	3	Vines on trunk, Deadwood	Trail between Rochelle Dr. and Bishop Hollow Run
560	Sweetgum	25	0	Fair	None	4	Bowed Trunk	Trail between Rochelle Dr. and Bishop Hollow Run
561	Pine-Loblolly	26	0	Fair	Prune-Deadwood	2	Deadwood over trail	Trail between Rochelle Dr. and Bishop Hollow Run
562	Pine-Loblolly	13	0	Fair	Prune-Deadwood	2	Deadwood over trail	Trail between Rochelle Dr. and Bishop Hollow Run
563	Pine-Loblolly	23	0	Fair	Prune-Deadwood	2	Deadwood over trail	Trail between Rochelle Dr. and Bishop Hollow Run

Maintenance Priority

City of Dunwoody



Maintenance Priority Level

Rochelle Dr Deadend Trail



Priority 1



Priority 2



Priority 3



Priority 4

Legend

- Roads
- Railroads
- ▭ Parcels
- ▭ Lakes / Water Features

1 inch = 50 feet

